



USB

Alphabet

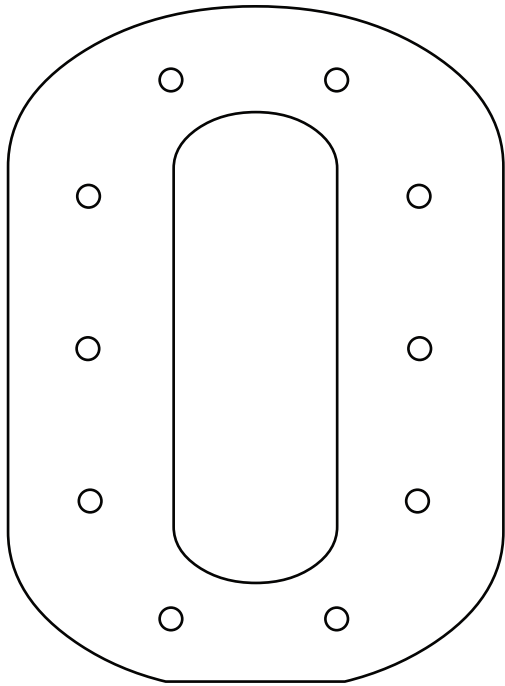
Includes complete Alphabet
and Numbers!



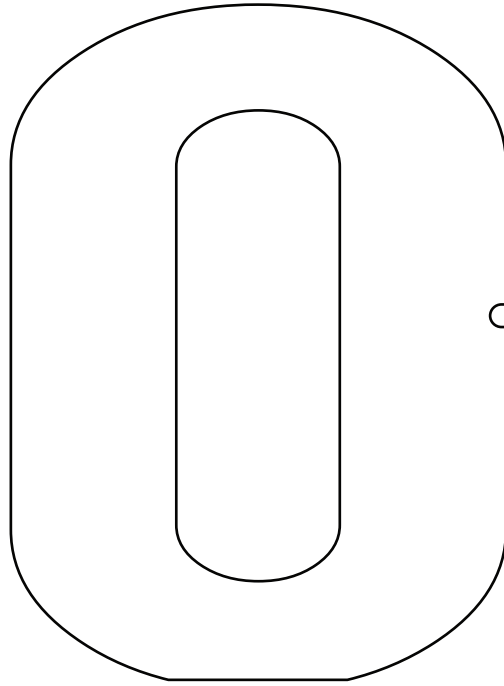
Cutting Craftorium - 3D Alphabet and Numbers

Letter O Assembly Instructions

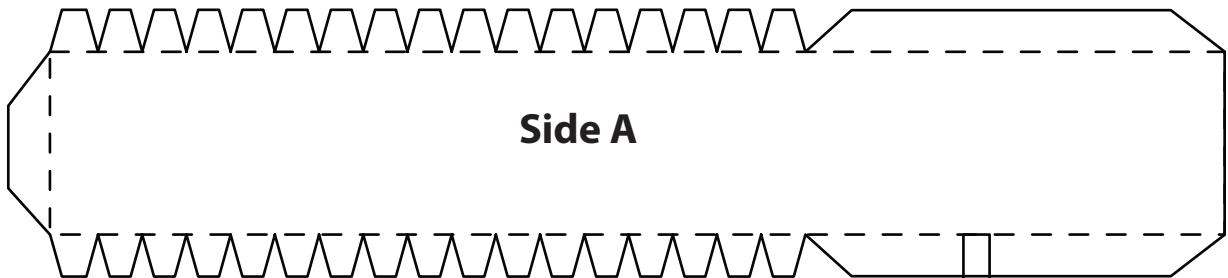
These are all the pieces you will need to Assemble your 3D Letter O.



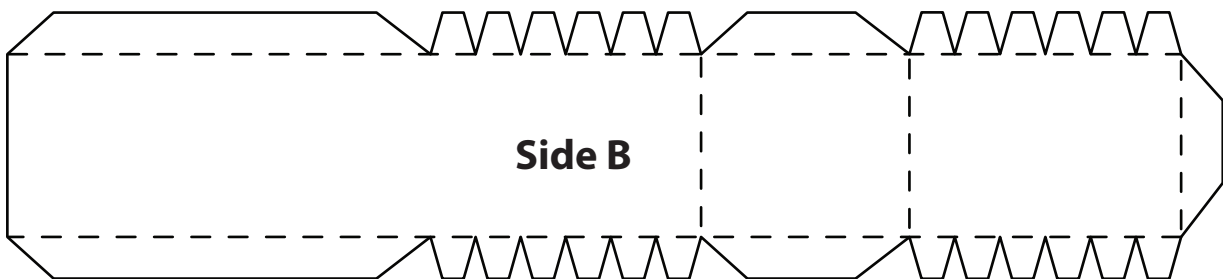
Front Panel



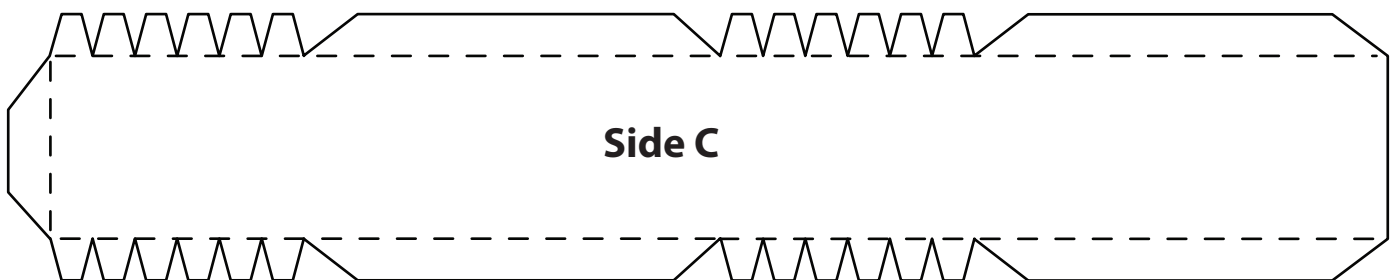
Back Panel



Side A



Side B

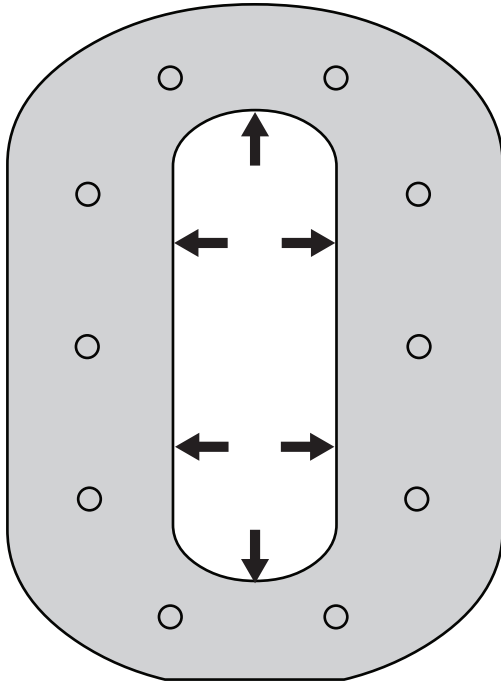


Side C

Cutting Craftorium - 3D Alphabet and Numbers

Letter O Assembly Instructions

Diagram 1.



Front Panel (Reverse Side)

Front Panel (Reverse Side)

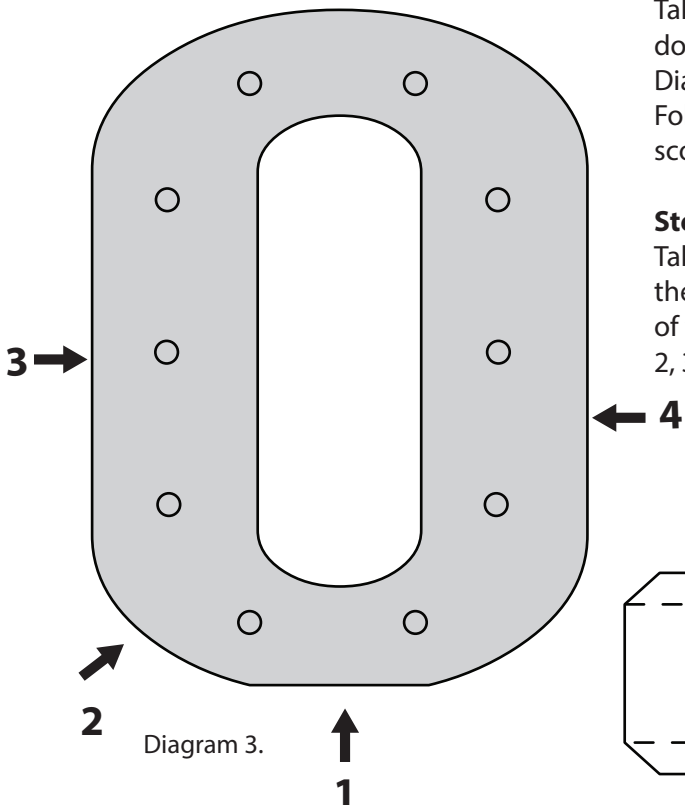


Diagram 3.

Step 1.
Cut all the required pieces shown on page one required to make the Letter O. These should be found in the folder O on the USB. If you wish to put the Bright Heart Lights in the number it is advisable to stick them to the reverse side of the front panel before you assemble the number. Make sure the battery pack is close to the small semi circle cut out on the back panel.

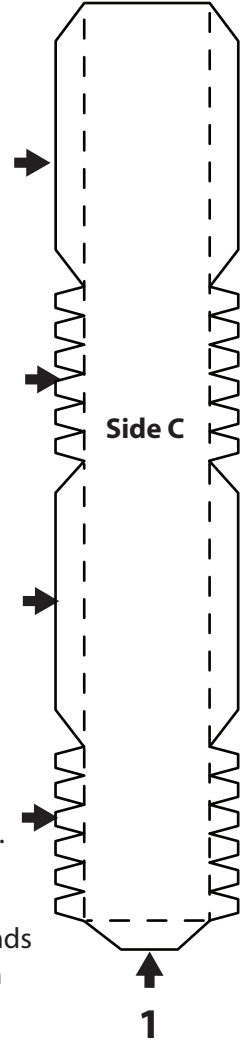
Step 2.
Take Side C and apply glue or double sided tape to all the tabs indicated in Diagram 2, including the tab at the end. Fold the tabs backwards along the scored line.

Step 3.
Now take the front panel and flip it onto the reverse side. Take side C and stick the tabs to the inside of the shape as indicated in Diagram 1. The long straight tabs will go along the straight sides and the multiple tabs will go along the curved top and bottom of the shape. Stick the ends of Side C together using the end tab labelled 1 in Diagram 2.

Step 4.
Take Side B and apply glue or double sided tape to all the tabs indicated in Diagram 4, including the tabs at the end. Fold the tabs backwards along the scored line.

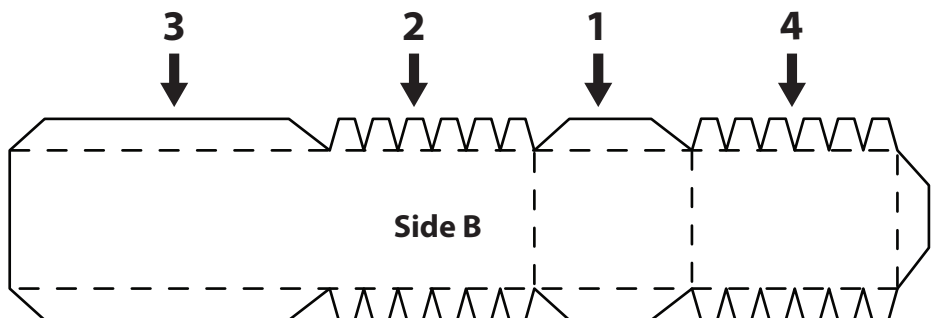
Step 5.
Take the reverse side of the Front Panel. Start by lining up the tab labeled 1 on Diagram 4 with the flat base on the outside bottom of the shape indicated in Diagram 3. Stick the tabs in Diagram 4 labelled 2, 3, and 4 to the corresponding tabs labelled in Diagram 3.

Diagram 2.



Side C

1



Side B

2

Diagram 4.

Cutting Craftorium - 3D Alphabet and Numbers

Letter O Assembly Instructions

Front Panel (Reverse Side)

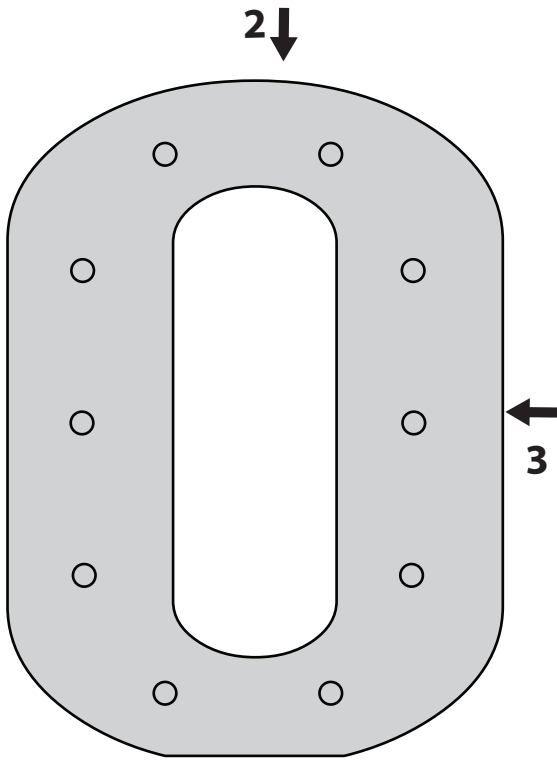
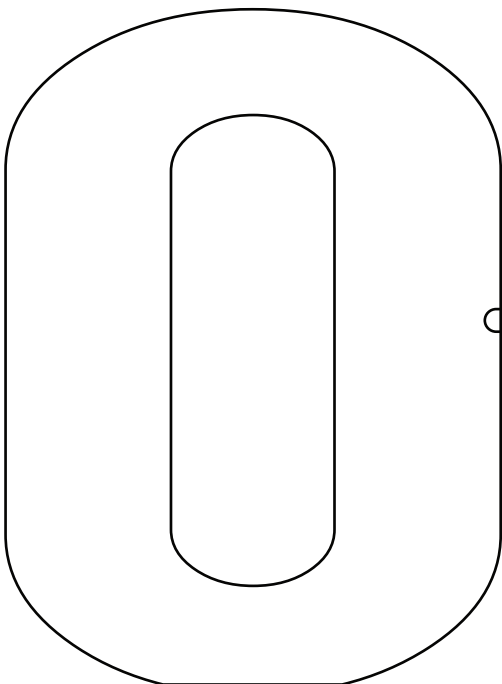


Diagram 5.

Diagram 7.



Back Panel

Step 6.

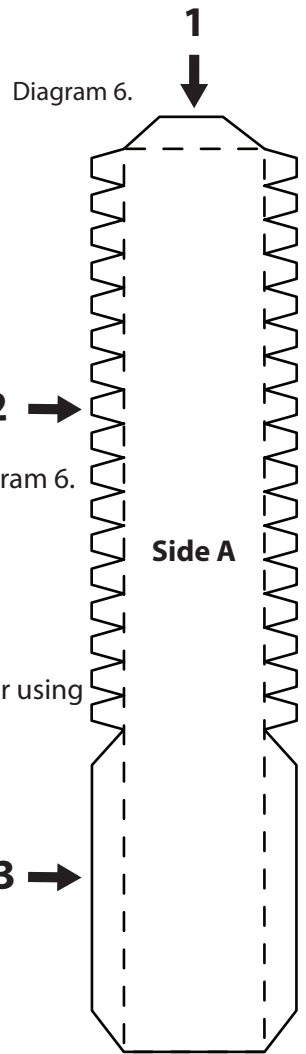
Take Side A and apply glue or double sided tape to all the tabs areas indicated in Diagram 6. Fold the tabs backwards along the scored line.

Step 7.

Join Side A to Side B using the tab labelled 1 in Diagram 6. Stick the tabs labelled 2 and 3 in Diagram 6 to the corresponding tabs labelled in Diagram 5.

Step 8.

Side A and Side B will now meet, stick them together using the tab on the end of Side B.



Step 9.

You should now have all the sides stuck down to the reverse side of the front panel.

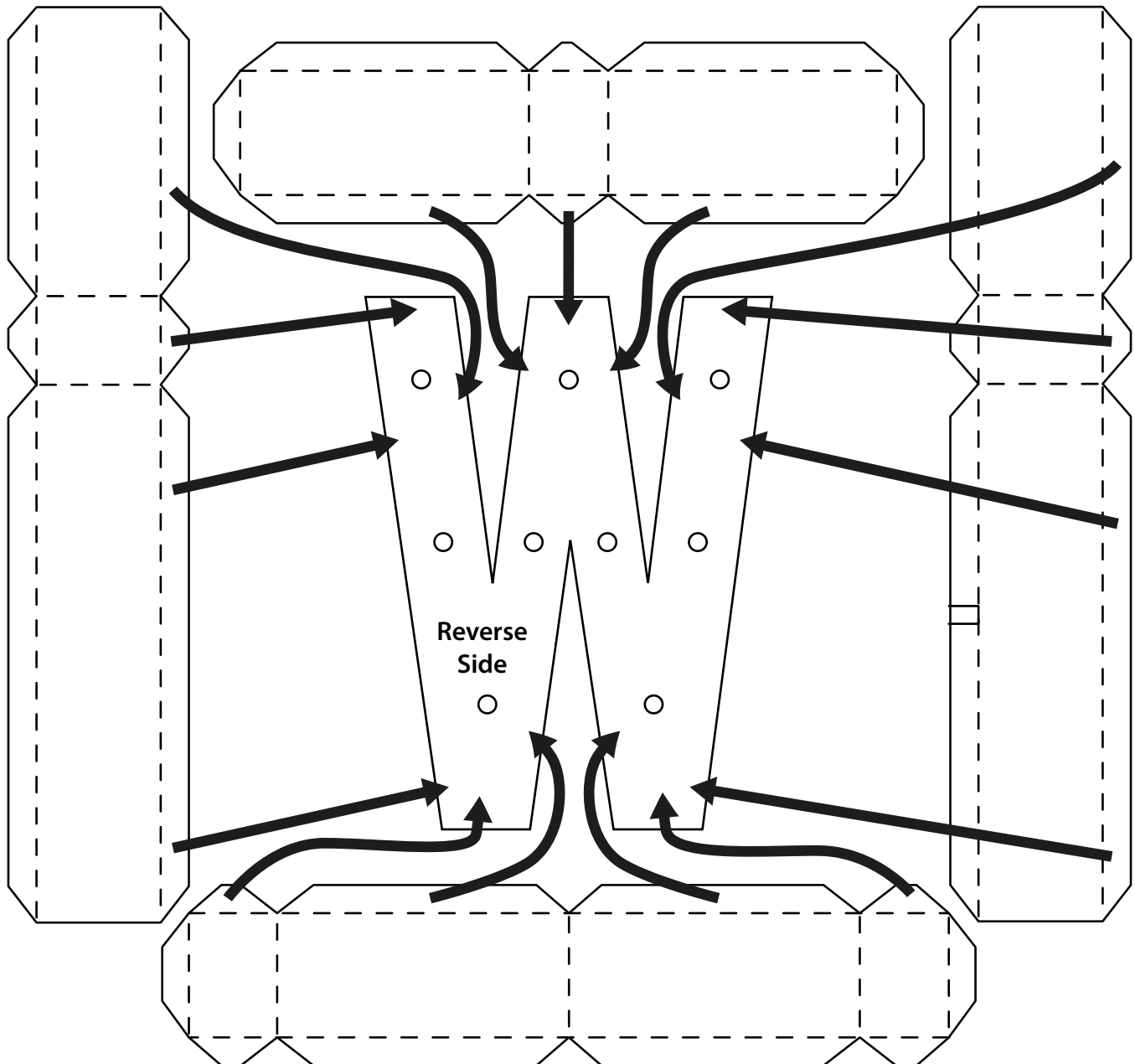
Finally take the Back Panel and line it up with reverse side of the Front Panel. If you have used The Bright Heart Lights make sure the the excess cable and battery pack is fed through the hole indicated on the Back Panel in Diagram 7. Once you are ready start to carefully attach the Back Panel to the glued tabs, firstly around the inner edge and then the tabs around the outer edge making sure all the gaps have been sealed.

Step 10.

You should now have your assembled 3D number. To finish off if you have used the Bright Heart Lights cut and assemble the simple Battery Pocket and stick it to the back of your number to hold your battery pack and to keep it out of sight.

Cutting Crafterium - 3D Alphabet and Numbers Letter W Assembly Instructions

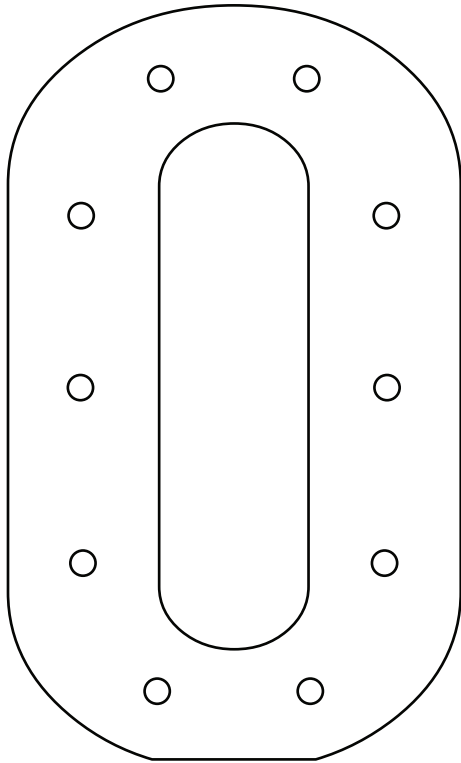
Firstly cut all the W and W Sides elements on the USB. Then place the W front reverse side up and carefully fold and stick the tabs of the sides to the front so the perforations line up to the edge of the shape as shown in the diagram below. If you are going to use the Bright Heart Lights in your shape now is the time to arrange and stick them into the letter before you attach the back.



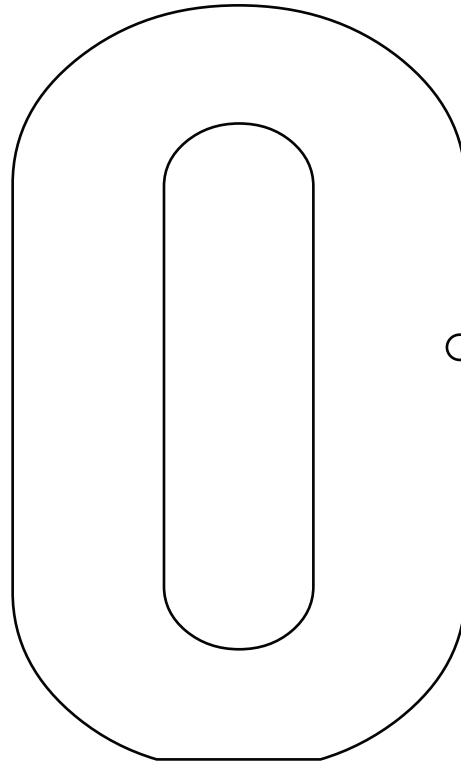
Cutting Craftorium - 3D Alphabet and Numbers

Zero Assembly Instructions

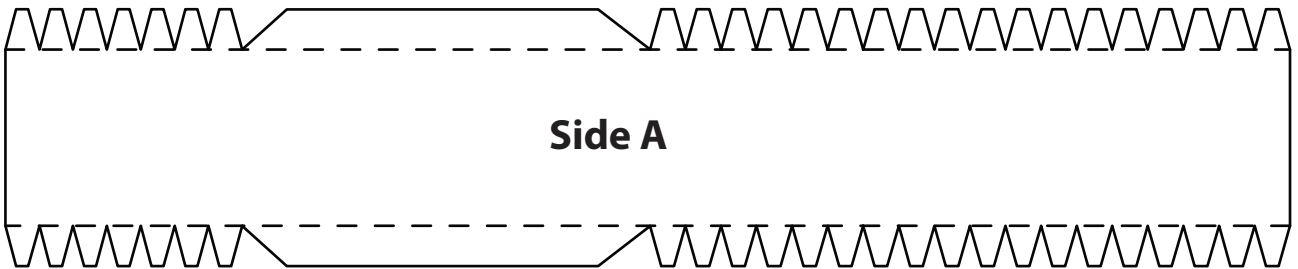
These are all the pieces you will need to Assemble your 3D Zero.



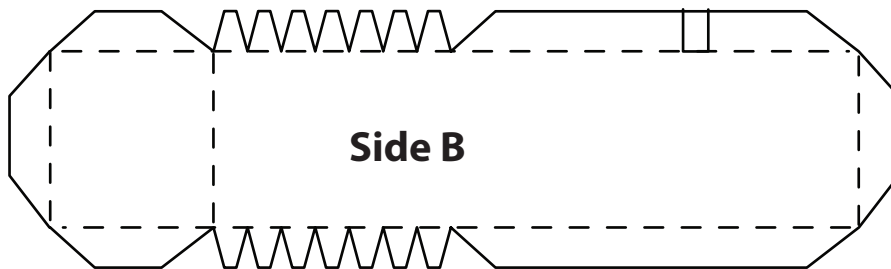
Front Panel



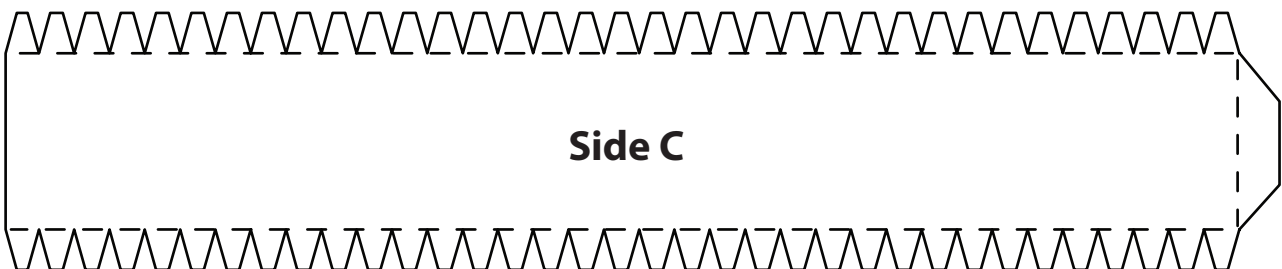
Back Panel



Side A



Side B

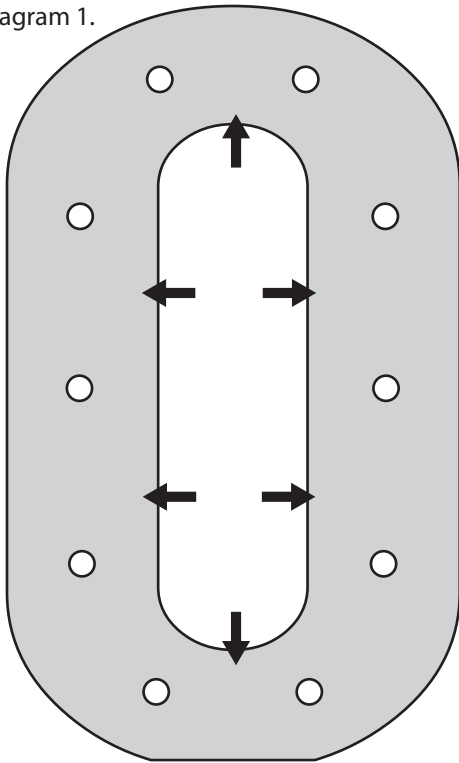


Side C

Cutting Craftorium - 3D Alphabet and Numbers

Zero Assembly Instructions

Diagram 1.



Front Panel (Reverse Side)

Front Panel (Reverse Side)

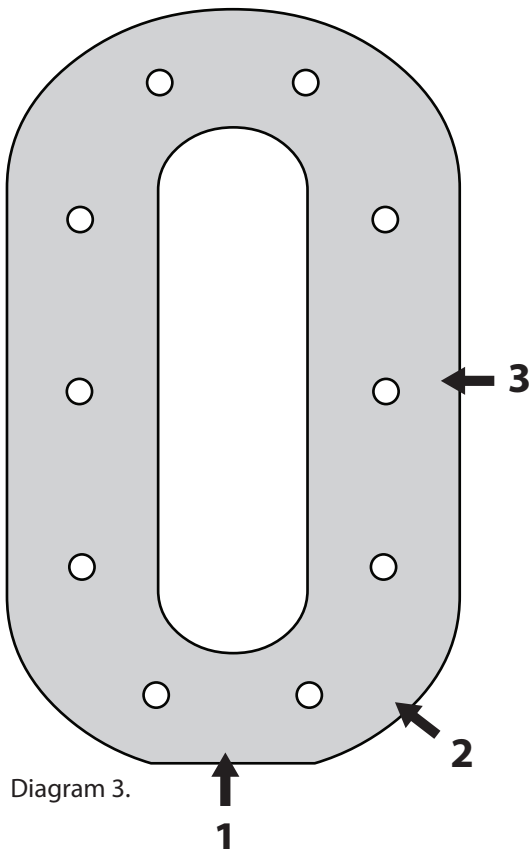


Diagram 3.

Step 1.

Cut all the required pieces shown on page one required to make the number zero. These should be found in the folder 0 on the USB. If you wish to put the Bright Heart Lights in the number it is advisable to stick them to the reverse side of the front panel before you assemble the number. Make sure the battery pack is close to the position indicated in Diagram 7 on the next page.

Step 2.

Take Side C and apply glue or double sided tape to all the tabs indicated in Diagram 2, including the tab at the end. Fold the tabs backwards along the scored line.

Step 3.

Now take the front panel and flip it onto the reverse side. Starting at any point on the inside edge of the Front Panel, stick the tabs from Side C indicated in Diagram 2 around the inner edge of the Front Panel indicated in Diagram 1 until the ends of Side C meet each other. Secure the ends together with the glued tab.

Step 4.

Take Side B and apply glue or double sided tape to all the tabs indicated in Diagram 4, including the tabs at the end. Fold the tabs backwards along the scored line.

Step 5.

Take the reverse side of the Front Panel. Start by lining up the tab labeled 1 on Diagram 4 with the outer edge labeled 1 on Diagram 3 and then sticking it down. Repeat this matching up tab sections 2 and 3 on Side B to the corresponding areas on the reverse side of the Front Panel.

Diagram 2.

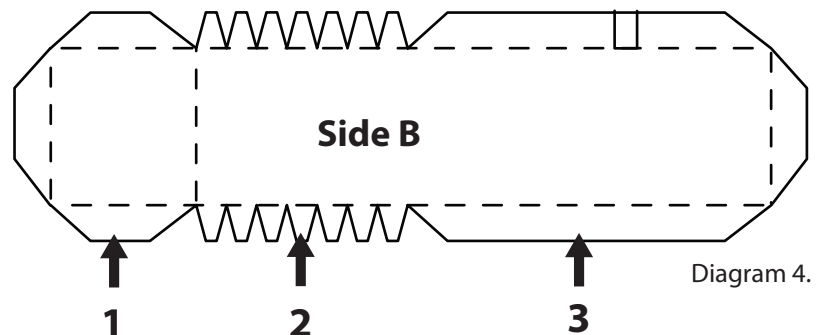
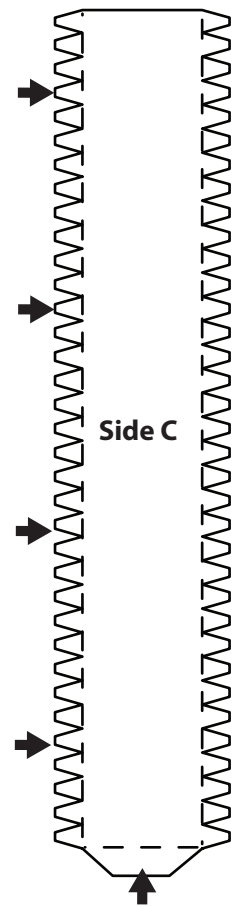


Diagram 4.

Cutting Craftorium - 3D Alphabet and Numbers

Zero Assembly Instructions

Front Panel (Reverse Side)

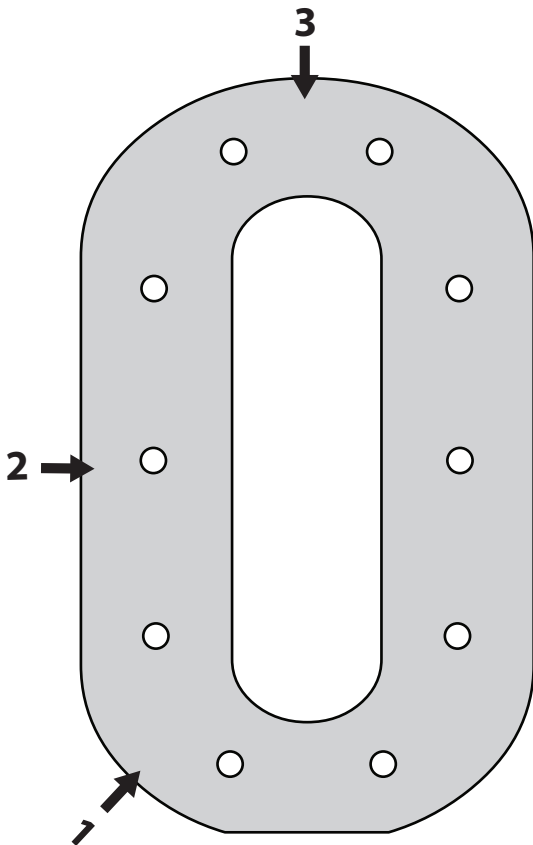


Diagram 5.

Step 6.

Take Side A and apply glue or double sided tape to all the tabs areas indicated in Diagram 6. Fold the tabs backwards along the scored line.

Step 7.

Take the reverse side of the Front Panel. Start by lining up the tabs labeled 1 on Diagram 6 with the outer edge labeled 1 on Diagram 5. (The end of Side A should touch the already attached Side B on the Front Panel). Then stick this down. Repeat this matching up tab sections 2 and 3 on Side A to the corresponding areas on the reverse side of the Front Panel.

Step 8.

Stick the overlapping tabs on each end of Side B underneath the ends of Side A.

Diagram 6.

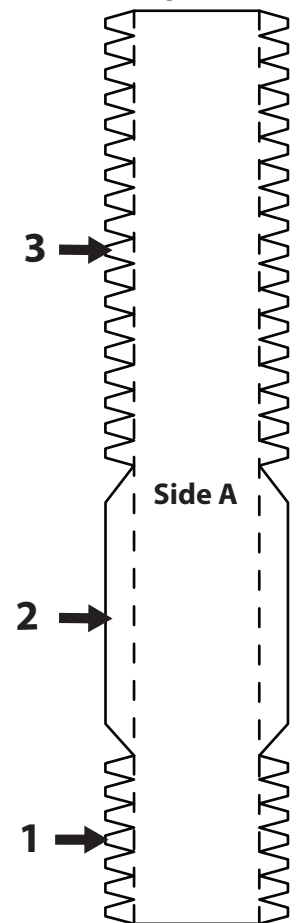
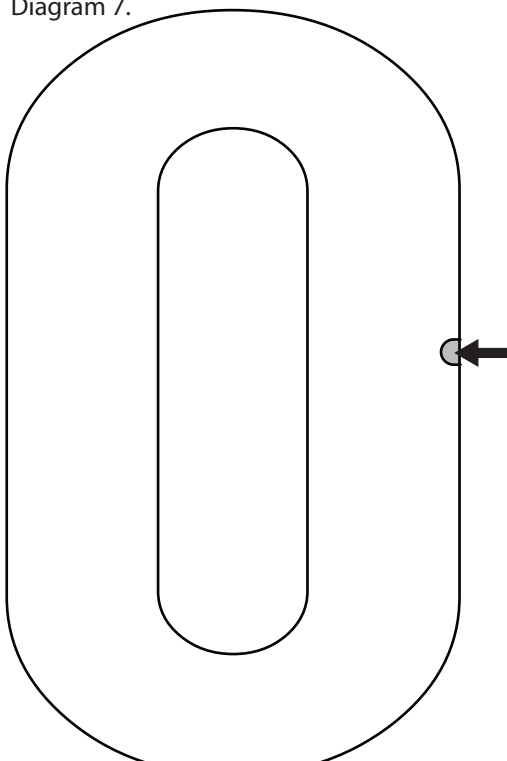


Diagram 7.



Back Panel

Step 9.

You should now have all the sides stuck down to the reverse side of the front panel. Next apply double sided sticky tape or glue to all the remaining tabs sticking out from the sides. Finally take the Back Panel and line it up with reverse side of the Front Panel. If you have used The Bright Heart Lights make sure the the excess cable and battery pack is fed through the hole indicated on the Back Panel in Diagram 7. Once you are ready start to carefully attach the Back Panel to the glued tabs, firstly around the inner edge and then the tabs around the outer edge making sure all the gaps have been sealed.

Step 10.

You should now have your assembled 3D number. To finish off if you have used the Bright Heart Lights cut and assemble the simple Battery Pocket and stick it to the back of your number to hold your battery pack and to keep it out of sight.

Cutting Crafforium - 3D Alphabet and Numbers Letter & Assembly Instructions

Firstly cut all the & and & Sides elements on the USB. Then place the & front reverse side up and carefully fold and stick the tabs of the sides to the front reverse side so the perforations line up to the edge of the shape as shown in the diagram below. If you are going to use the Bright Heart Lights in your shape now is the time to arrange and stick them into the letter before you attach the back.

