

GINGERBREAD MAN



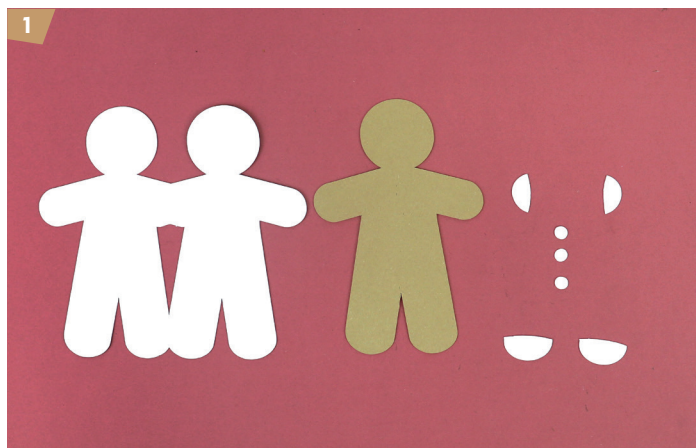
To create the tags:

Bring the Gingerbread People files into Canvas Workspace, or edit on the Scan N Cut. Align the files horizontally and vertically central and group. Resize until the gingerbread people are 78mm wide (the man will be 117mm high and the lady will be 125mm high). Ungroup. Duplicate each person and overlap side-by-side, weld to create the tag base.



YOU WILL NEED

- Kraft card
- White cardstock
- Crystal glitter
- White fineliner



GINGERBREAD LADY



To create the tags:

Bring the Gingerbread People files into Canvas Workspace, or edit on the Scan N Cut. Align the files horizontally and vertically central and group. Resize until the gingerbread people are 78mm wide (the man will be 117mm high and the lady will be 125mm high). Ungroup. Duplicate each person and overlap side-by-side, weld to create the tag base.



YOU WILL NEED

1. Cut the tag base and embellishments from white cardstock. Cut the clothing from blue cardstock and the gingerbread lady from kraft card.
2. Score and fold the tag base in half.
3. Add faux stitching to the border of the gingerbread lady using the fineliner. Add glitter to the white embellishment pieces.
4. Layer and stick the pieces onto the tag. Add a face and any desired final touches to the gingerbread lady using the fineliner.

- Kraft card
- White cardstock
- Blue cardstock
- Crystal glitter
- White fineliner

