

Mini Maker's Toybox



INSTRUCTION BOOKLET

The Cutting Craftorium Collection

Have you got them all?

Alphabet

Romance Vol.1

Easter

Celebrations

Home Sweet Home

Romance Vol.2

Daydreaming

Christmas Vol.2

Play

Pop

Decorative Dimensions
Vol.2

Days Out

Spring

Love Is In The Air

Daydreaming 2

Shopaholic

Making Me Time

Sunshine Days

Feeling Festive

Feeling Festive

Pretty And Purposeful

Tea and Cakes

Trick Or Treat

Ephemera

Pretty and
Purposeful 2

Just My Type

Just Be Mine

Pretty and
Purposeful 3

Complete Card Making

Free Time

Ephemera 2

Christmas Selection
Box

Build a Botanical

Craft Room Secrets

Christmas
Compendium

Millinery and More

NEW!

Mini Maker's Toybox

Contents

<u>Projects</u>	<u>Page</u>	
Animal Ark Door Sign.....	5	Hangers 24
Animal Bunting	6	Height Chart.....24-25
Animal Chalkboard.....	6	Jungle Door Sign 26
Animal Headbands	7	Magnetic Paper Doll 27
Safari Party Bags.....	8	Party Sign27-28
Animal Pen Pots	8-9	Rabbit Shelves 29
Barnyard.....	10-11	Rocket Wall Hanging 30
Safari Bookends	12	Shadow Boxes31-33
House Shelves	13-14	Tea Set34-35
Castle	14-15	Tepee 36
Chalkboard Laptop.....	16	Toybox37-38
Chalkboard Phone.....	17	Village and Car38-41
Colouring Pages.....	17-18	Jelly Bean 42
TV Shelf	19	Tiny Tot 43
Face Crayon Pot20-21		Stencils 44
Flower Crown		Embellishment
and Wand	21	Toolbox..... 44
Hairband Holder	22-23	Animals.....44-47

Designer Tips

Some of the projects within the book use construction board.

Where possible we have included how to make these projects using card, however the finished results will not be as strong.

If you are using 750 micron construction board you will need to cut 4 layers of each section. If you are using 1000 micron construction board you will need to cut 3 layers of each section.

Working with construction board

You will need:

A sanding block

A good PVA glue

An alcohol marker to colour the edges of each section

Patterned papers from the USB or from your stash

Once you have cut and glued your construction board layers together you can then cover them with patterned paper before assembling.

Make sure you let each section dry before moving on to the next.

Animal Ark Door Sign

Finished size - 9.9 inches x 10.8 inches



Cutting List

Construction board

- 1 x Ark Back
- 1 x Ark Mats
- 1 x Ark
- 1 x Chalkboard
- 1 x Frame

Card

- 1 x Elephant 1
- 1 x Elephant 2
- 1 x Giraffe 1
- 1 x Giraffe 2
- 1 x Lion 1
- 1 x Lion 2

Additional Items

- Chalkboard paint
- Ribbon or string

1. Glue the layers of construction board together to create all of the sections. Allow to dry.
2. Cover each section on one side with card or paint. Allow to dry. Paint the Chalkboard piece with chalkboard paint.
3. Use an alcohol marker or paint to colour the edges of each section.
4. Glue the Ark onto the Ark Back. Allow to dry.
5. Glue the Chalkboard and Ark Mats in place. Allow to dry.
6. Arrange the Animals onto the Ark and glue in place.
7. Glue the Frame in place on top of the Ark.
8. Cut a length of Ribbon or String and glue onto the back of the Door Sign to hang on a door.

Animal Bunting

Finished size - 5 inches x 3 inches



1. Cut out all the pieces. Decorate them as desired.
2. Layer and glue the animal faces onto the animal heads.
3. Loop ribbon through each of the Animals to make bunting.

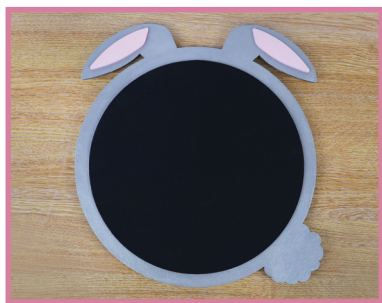
Cutting List

Cut as many of each Animals to make your bunting.

Additional Items

Ribbon and String

Animal Chalkboard



Cutting List

Per Animal Chalkboard

Construction board

1 x Chalkboard Circle

1 x Frame

1 x Ears

Additional Items

Chalkboard paint

1. Glue the layers of construction board together to create all of the sections. Allow to dry.
2. Cover each section on one side with card or paint. Allow to
- dry. Paint the Chalkboard Circle piece with chalkboard paint.
3. Use an alcohol marker or paint to colour the edges of each section.
4. Glue the Chalkboard Circle onto the Frame. Allow to dry.
5. Glue the Ears in place. Allow to dry.

Animal Headbands

Cutting List

Per Headband

1 x Headband

1 x Embellishments

1 x Head

Additional Items

Ribbon or String

1. Cut out all the pieces and decorate them as desired.
2. Glue the Head and Embellishments onto the Headband.
3. Cut a length of ribbon or string to the correct length for whoever will wear it. Thread it through the holes on the Headband and tie.



Safari Party Bags

Finished size - 6.4 inches x 3.15 inches



Cutting List

Per Party Bag

- 1 x Bag
- 1 x Embellishment
- 1 x Name Label

1. Cut out all the pieces and decorate them as desired.
2. Fold along the score lines on the Bag and use the tabs to glue it together. Glue the extra tab under the lid.
3. Glue the Embellishments in place onto the Bag.
4. Glue the Name Label in place onto the front of the Bag.

Animal Pen Pots

Finished size - 3.12 inches x 3.7 inches



Cutting List

Pen Pot

Cut either the construction board or Card version of the Pen Pot.

Construction Board Version

- 1 x Base
- 2 x Front and Back
- 2 x Side

Cut all of the above twice from card or patterned paper.

Card Version

1 x Pot

1 x Pot Inside Mats

1 x Pot Outside Mats

Animal Embellishments

Cut one Animal per Pen Pot

1 x Face

1 x Face Mat

1 x Tail

Construction board

1. Glue the layers of construction board together to create all of the sections. Allow to dry.
2. Cover each section on one side with card or paint. Allow to dry.
3. Use an alcohol marker or paint to colour the edges of each section.
4. Glue the Sides onto the Base. Allow to dry.
5. Glue the Front and Back onto the remaining sides of the Base.

Card

1. Fold along all the score lines on the Pot and use the tabs to glue it together.

2. Glue the Inside Mats onto the inside of the Pot. Allow to dry
3. Glue the Outside Mats into the outside to add strength. Allow to dry.

Animal Embellishments

1. Taking the Face Mat pieces, align and glue them in place onto the Face piece. Allow to dry.
2. Glue the Face Mat piece onto the front of the Pot. Glue the Tail onto the Back.

Barnyard

Finished size - 10.10 inches x 10.6 inches



Cutting List

Construction board version Construction board

- 1 x Back
- 1 x Front
- 2 x Side
- 1 x Base

Cut all of the above twice from card or patterned paper.

Card

- 1 x Back Embellishments
- 1 x Back Mat
- 1 x Front Embellishments
- 1 x Front Mat
- 2 x Side Embellishments
- 2 x Side Mat

Card Version

- 1 x Back Embellishment
- 1 x Back Mat
- 2 x Back
- 1 x Front Embellishments
- 1 x Front Mat
- 2 x Front
- 2 x Side Embellishments
- 4 x Side Mat 1
- 2 x Side Mat 2
- 2 x Side

Animals

Cut from construction board (for each animal)

- 1 x Animal

Cut from card

- 1 x Animal Embellishments

Construction board version

1. Glue the layers of construction board together to create all of the sections. Allow to dry.
2. Cover each section on both sides with card or paint. Allow to dry.
3. Use an alcohol marker or paint to colour the edges of each section.
4. For each section, glue the Mat and Embellishments in place and allow to dry.
5. To build the Barn, slot the Side pieces into the Front and Back pieces.
6. Place the Barn on top of the Base.

Card version

1. Taking one of the Front and Back pieces and two of the Side pieces. Glue their corresponding Mats and Embellishments in place. For the Side Mat 1, two of the Mats will be glued on the inside once built.
2. Taking one of the Side pieces, glue the Front and Back pieces onto the tabs on either side. Allow to dry.
3. Glue the final Side piece in place. Allow to dry.
4. Taking the remaining Front, Back and Side pieces, glue them onto

the inside of the Barn, covering the tabs and adding strength. For more strength cut these pieces out again and glue in place on the inside.

Animals

1. For each animal cut your chosen animal from construction board.
2. Glue the layers of construction board together to create all of the sections. Allow to dry.
3. Cover each section on both sides with card or paint. Allow to dry.
4. Use an alcohol marker or paint to colour the edges of each section.
5. Decorate the animal with their corresponding Embellishments.
6. Slot the two animal pieces together.

Safari Bookends

Finished size - 8 inches x 6.4 inches

Cutting List

Per Bookend

Construction board

- 1 x Base
- 1 x Side
- 1 x Support
- 2 x Side Support
- 1 x Giraffe

Cut all of the above twice from card or patterned paper.

1. Glue the layers of construction board together to create all of the sections. Allow to dry.
2. Cover each section on both sides with card or paint. Allow to dry.
3. Use an alcohol marker or paint to colour the edges of each section.
4. Glue the edge of the Base onto the Side. Allow to dry.
5. Glue the Support pieces along the Side piece evenly.
6. Glue the two Side Support pieces on either side of the Base, gluing one end to the Side.
7. Glue on the Support Decoration onto the Support piece.



8. Layer up the pieces of the Giraffe and then glue it onto the Support piece.
9. Repeat steps 4-8 for the second Bookend, making sure to flip any pieces as needed.

House Shelves

Finished size - 10.7 inches x 8 inches

Cutting List

Shelf

Construction board

- 1 x Back 1
- 1 x Back 2
- 1 x Base
- 1 x Roof 1
- 1 x Roof 2
- 2 x Side

Cut all of the above twice from patterned paper and card.

Cut either the House Embellishments or the Big Top Embellishments to decorate the Shelves.

House Embellishments

Card

- 1 x Roof Mat 1
- 1 x Roof Mat 2
- 1 x Roof Mat 3
- 2 x Window
- 2 x Shutters

Big Top Embellishments

Construction board

- 1 x Big Top Front

Card

- 1 x Big Top Mats
- 1 x Bunting
- 1 x Stripes

1. Glue the layers of construction board together to create all of the sections. Allow to dry.



2. Cover each section on both sides with card or paint. Allow to dry.
3. Use an alcohol marker or paint to colour the edges of each section.
4. Glue the Back onto the edge of the Base. Allow to dry.
5. Glue the Sides onto the edge of the Base and Back piece. Allow to dry.
6. Glue Roof 1 onto the Back piece and secure onto the Side piece. The Roof will overhang slightly to allow for gluing and securing. Allow to dry.
7. Glue Roof 2 onto the Back, Roof 1

and Side pieces. Allow to dry.

Roof. Allow to dry.

House Embellishments

1. Layer up and glue the Window pieces together and then glue in place onto the Shutter pieces. Allow to dry.
2. Glue the Shutter pieces onto the windows on the outside of the Side pieces. Allow to dry.
3. Glue Roof Mat 1 and 2 pieces in place onto the corresponding Roof pieces. Allow to dry.
4. Glue Roof Mat 3 on top of the

Big Top Embellishments

1. Layer up and glue the Big Top Mats onto the Big Top Front. Allow to dry.
2. Glue the Stripes onto the front of the Big Top piece.
3. Glue the Big Top piece onto the front of the Shelves.
4. Glue the Bunting onto the Back of the inside of the Shelves.

Castle

Finished size - 5 inches x 12 inches



Cutting List

- 1 x Back
- 1 x Base
- 1 x Front
- 2 x Side
- 1 x Back Mat
- 1 x Base Mat
- 1 x Front Mat
- 2 x Side Mat
- 1 x Door
- 11 x Window Mat
- 2 x Lid Top
- 2 x Lid Side
- 2 x Lid Side Mat
- 2 x Lid Front and Back

2 x Lid Front and Back Mat
4 x Turret
4 x Turret Mat
4 x Turret Top
4 x Turret Top Mat
4 x Turret Window Mat
4 x Turret Strip

Additional Items

Ribbon or String

1. Cut out all the pieces and decorate them as desired.
2. Glue the Front piece and the Back piece onto the Base using the tabs.
3. Glue the Side pieces onto the other sides of the Base.
4. Glue the Front and Back pieces to the Side pieces using the tabs.
5. Glue the corresponding Mats in place for strength.
6. Glue the Door onto the Front piece using the tab. Glue two pieces of Ribbon or String onto either side of the Door, and attaching the other ends to the Front to create a drawbridge.
7. Glue the Window Mats around the outside of the Front, Back and Sides, aligning the Mats with the Windows.
8. Take one Lid Top piece, glue the Lid Front and Back and Lid Sides to it using the tabs.
9. Glue the other Lid Top piece on top to hide the tabs and add strength.
10. Glue the corresponding Lid Mats to the Lid Front and Back and Lid Sides.
11. To make a Turret, fold along the score lines and curve the big part of the piece. Glue the tabs on either end to the circular pieces to keep the pieces shape.
12. Glue a Turret Mat and a Turret Window Mat on top of the Turret.
13. Glue the Turret Top onto the top of the Turret. Add the Turret Top Mat onto the inside.
14. Glue the Turret Strip around the bottom of the Turret Top.
15. Repeat steps 11-13 to make three more Turrets.
16. Place the Turrets around the corners of the Castle.

Chalkboard Laptop

Finished size - 7.8 inches x 11 inches



Additional Items

Chalkboard paint

Hinges

1. Glue the layers of construction board together to create all of the sections. Allow to dry.
2. Cover each section on both sides with card or paint. Paint the Top and Base with chalkboard paint.
3. Use an alcohol marker or paint to colour the edges of each section.
4. Glue the two Top Mat pieces together and glue the two Base Mat pieces together.
5. Glue the Top Mat pieces onto the Top piece.

Cutting List

Construction board

- 2 x Top and Base
- 2 x Top Mat
- 2 x Base Mat
- 2 x Divider

6. Glue the Base Mat pieces onto the Base piece.
7. Glue the Hinges on to the Top and Base pieces so they can open and close like a laptop. Make sure the sides with the Chalkboard and Mats are on the inside.

Chalkboard Phone

Finished size - 5 inches x 3.2 inches



Cutting List

Construction board

1 x Phone Back

2 x Phone Front

Additional Items

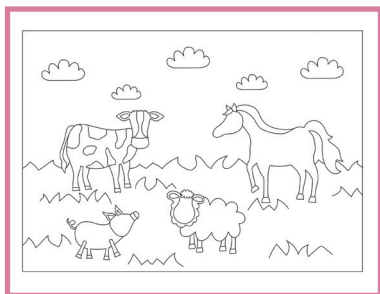
Chalkboard paint

1. Glue the layers of construction board together to create all of the sections. Allow to dry.
2. Cover each section on both sides with card or paint. Paint the Phone Back with chalkboard paint.
3. Use an alcohol marker or paint to colour the edges of each section.
4. Glue the Phone Front onto the Phone Back.

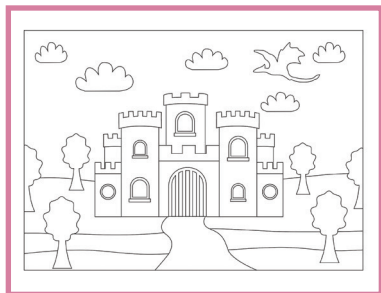
Colouring Pages



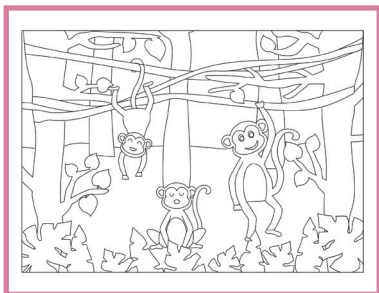
Fairytale Castle



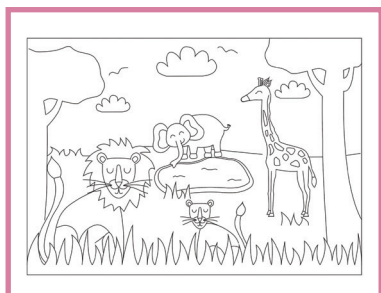
Farm



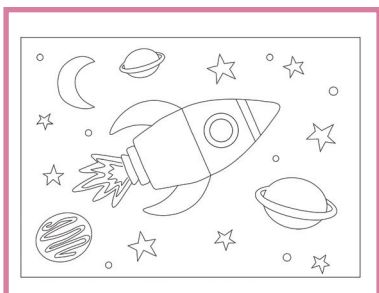
Medieval Castle



Monkeys



Savannah



Space



Barnyard

TV Shelf

Finished size - 14 inches x 10.11 inches



Cutting List

Construction board

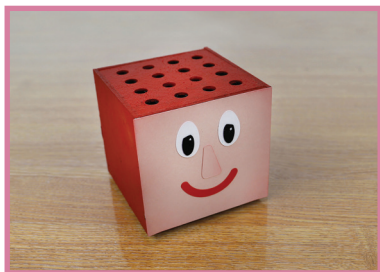
- 1 x Back
- 1 x Front Embellishment
- 1 x Front
- 2 x Side
- 2 x Top and Base

Cut all of the above twice from card or patterned paper.

1. Glue the layers of construction board together to create all of the sections. Allow to dry.
2. Cover each section on both sides with card or paint. Allow to dry.
3. Use an alcohol marker or paint to colour the edges of each section.
4. Glue the Side pieces onto the sides of the Back.
5. Glue the Top and Base in placew onto the Back piece.
6. Glue the Front on top of the Sides and Top and Base pieces.
7. Glue the Front Embellishments onto the Front piece.

Face Crayon Pot

Finished size - 3.8 inches x 3.13 inches



Card Version

- 1 x Box
- 2 x Inside Mats
- 2 x Outside Mats
- 2 x Top and Support

Cut the Face as desired.

Construction board version

1. Glue the layers of construction board together to create all of the sections. Allow to dry.
2. Cover each section on both sides with card or paint. Allow to dry.
3. Use an alcohol marker or paint to colour the edges of each section.
4. Glue the Side pieces onto the edge of the Base.
5. Glue one of the Front and Back pieces onto the edge of the Base.

Cutting List

Cut either the construction board or the card version

Construction Board Version

- 1 x Base
- 2 x Front and Back
- 2 x Side
- 2 x Top and Support

6. Glue one Top and Support piece in between the Sides and Back piece in the centre of the pieces.
7. Glue the other Top and Support piece in, in line with the top of the Back and Sides.
8. Glue the final Front piece onto the side of the Pot.
9. Glue the chosen Faces pieces onto the Side of the Pot.

Card version

1. Fold along the score lines on the Box and glue in place using the tabs.
2. Glue the Inside Mats onto the inside of the Box.
3. Glue the Outside Mats onto the outside of the Box.

4. Glue one of the Top and Support pieces inside the Box around halfway down.
5. Glue the other Top and Support piece into the Top.
6. Glue the chosen Faces pieces onto the Side of the Box.

Flower Crown and Wand

Finished size - Wand - 15 inches x 4.8 inches,

Flower Crown - 3 inches x 16 inches

Cutting List

Flower Crown

- | | |
|--------------------|------------------|
| 1 x Base Crown | 2 x Star |
| 1 x Vine | 2 x Star Mats |
| 1 x Vine with | Strip |
| Leaves | Embellishment as |
| Flowers as desired | desired |

Wand

- 1 x Wand Base
- 2 x Wand

Additional Items

Ribbon or String



holes and tie them at the correct length for the user.

Wand

1. Layer up the pieces on either side of the Wand Base, starting with the wand, then the Star and the Star Mats.
2. Glue the Strip Embellishments around the Base of the Star as desired.

Flower Crown

1. Glue the Vine and Vine with Leaves pieces onto the Base Crown. Curve the pieces before the glue dries so it will sit on a head right.
2. Add on Flowers to the Crown as desired.
3. Loop ribbon or string through the

Hairband Holder

Finished size - 11.2 inches x 8.14 inches



Cutting List

Cut either the construction board or the card version

Construction board version

1 x Back
2 x Base and Shelf
1 x Drawer Back
1 x Drawer Base
1 x Drawer Front
2 x Drawer Side
2 x Side
1 x Hairband Holder Base
2 x Hairband Holder Side
1 x Hairband Holder Top (one layer of construction board only)

Card version

1 x Back and Shelf
1 x Base
2 x Drawer Side
1 x Drawer

2 x Side
1 x Back and Shelf Mats
1 x Drawer Mats
2 x Side Mats
2 x Hairband Holder
4 x Hairband Holder Side

Construction board version

1. Glue the layers of construction board together to create all of the sections. Allow to dry.
2. Cover each section on both sides with card or paint. Allow to dry.
3. Use an alcohol marker or paint to colour the edges of each section.
4. Build the Drawer by gluing the Drawer Sides onto the Drawer Base.

5. Glue the Drawer Back onto the back of the Base and Sides and glue the Drawer Front onto the other side.
6. To make the Hairband Holder, glue the Hairband Holder Sides onto either end of the Hairband Holder Base.
7. Curve the Hairband Holder Top before gluing it to one side of the Hairband Holder Base. Allow to completely dry before continuing.
8. Carefully curve the Hairband Holder Top over the Hairband Holder Sides, gluing and leaving to dry as it is curved. Once it gets to the other side, glue it to the side of the Hairband Holder Base and allow to completely dry.
9. Glue the Sides onto the edge of the Base piece.
10. Glue the Back piece onto the Back of the Base and Sides.
11. Place the Drawer into the Holder and glue the Shelf piece so its in line with the top of the Back.
12. Glue the Hairband Holder in between the top of the Side pieces.

Card version

1. Build the Drawer by gluing the Drawer Sides onto the Drawer, to form the Drawer. Allow to dry.
2. Glue the Drawer Mats in place. Allow to dry.
3. To build the Hairband Holder, glue the tabs on the Hairband Holder onto the Hairband Holder Side piece. Sandwich the tabs between the Side pieces to hide them.
4. Glue the Sides onto the Base piece using the tabs.
5. Taking the Back and Shelf piece, fold along the scorelines, the smaller rectangle folds to form the Back. Glue the longest tab onto the Base of the Holder. Allow to dry.
6. Glue the remaining tabs on the Back and Shelf piece onto the Sides to form the Back and Shelf of the Holder.
7. Glue the Back and Shelf and Side Mats in place.
8. Glue the Hairband Holder in between the top of the Side pieces, using the tabs to glue pieces to each other and adding in Mats for strength as it is built.

Hangers

Finished size - Rabbit - 9 inches x 8 inches, Rocket - 14.8 inches x 6.10 inches



Cutting List

Construction Board

1 x Rabbit
or 1 x Rocket and Rocket Fire

1. Glue the layers of construction board together to create all of the sections. Allow to dry.
2. Cover each section on both sides with card or paint. Allow to dry.
3. Use an alcohol marker or paint to colour the edges of each section.
4. Decorate as desired.

Height Chart

Finished size - 40.6 inches x 9 inches

Cutting List

Construction Board

2 x Back Panel 1
1 x Back Panel 2
1 x Giraffe Head

Card

3 x Giraffe Pattern
1 x Giraffe Head Embellishment
1 x Giraffe Head Mane
3 x Giraffe Mane

Choose either the 12x12 Ruler Cutting and Drawing Files or the 12x24 Ruler Cutting and Drawing Files.

1. Glue the layers of construction board together to create all of the sections. Allow to dry.
2. Cover each section on both sides with card or paint. Allow to dry.



3. Use an alcohol marker or paint to colour the edges of each section.
4. Glue the Giraffe Pattern onto the Back Panel pieces.
5. Glue the Giraffe Head Embellishment onto the Giraffe Head.
6. Glue either the 12x12 Cutting and Drawing files or the 12x24 Cutting and Drawing files. If using the 12x24 ones, cut down the middle of 67 and 95 with scissors.
7. Glue the Giraffe Mane and the Ruler onto the Back Panel pieces, making sure the Back Panel 2 is the bottom Panel.
8. Glue the Giraffe Head Mane onto the Giraffe Head piece.
9. Slot the Back Panels and Heads into each other on the correct order.
10. When hanging the Height Chart on a wall, make sure it is hung so the bottom of the Height Chart is 40cm from the ground for an accurate measurement.

Jungle Door Sign

Finished size - 11 inches x 11 inches



Cutting List

Construction board

1 x Back

1 x Sign

Card

1 x Leaves

1 x Leaves 2

Additional Items

Ribbon or String

1. Glue the layers of construction board together to create all of the sections. Allow to dry.
2. Cover each section on both sides with card or paint. Allow to dry.
3. Use an alcohol marker or paint to colour the edges of each section.
4. Align the Leaves onto the Back piece and glue in place. Allow to dry.
5. Align the Sign onto the Door Sign and glue in place. Allow to dry.
6. Cut a length of ribbon or string and attach onto the back of the Sign to allow hanging on a door.

Magnetic Paper Doll

Finished size - 11 inches x 4 inches



Cutting List

1 x Doll

Cut Hair and Clothing as desired

Everything cut out of Card will also need to be cut out of a Magnetic Sheet.

Additional Items

Magnetic Sheets

1. Cut out all the pieces and decorate them as desired.
2. Cut out all the pieces out of Card and matching pieces out of the Magnetic Sheets.
3. Glue the corresponding Card and Magnetic pieces together.
4. Add any Embellishments to the pieces.

Party Sign

Finished size - 10.8 inches x 13 inches

Cutting List

Construction board

Side Post (Per Post) x2

2 x Base 1

1 x Base 2

2 x Base and Top

2 x Front and Back

2 x Side



Top Post

- 2 x Base and Top
- 2 x Front and Back
- 2 x Side

Sign

- 1 x Back
- 1 x Frame
- 1 x Sign

Cut all of the above from card or patterned paper as well.

Additional Items

Ribbon or string

1. Glue the layers of construction board together to create all of the sections. Allow to dry.
2. Cover each section on both sides with card or paint. Allow to dry.
3. Use an alcohol marker or paint to colour the edges of each section.
4. Glue the Side pieces in place around the edge of one of the Base and Top pieces. Allow to dry.
5. Glue one of the Front and Back pieces in place, on the edge of the Base and Side pieces. Allow to dry.
6. Slide the Top piece in and glue in place. Allow to dry.
7. Glue the final Front and Back piece in place. Allow to dry.

8. Glue the Base 1 pieces together and then glue them onto Base 2. Allow to dry.
9. Slot the Side Post into the Base and glue in place.
10. Repeat steps 4-9 to make another Side Post.

Top Post

1. Glue the Base and Top pieces in place onto the edge of one of the Side pieces. Allow to dry.
2. Glue one of the Front and Back pieces in place, on the edge of the Base and Top and Side pieces. Allow to dry.
3. Glue the final Front and Back piece in place. Allow to dry.
4. Slot the Top Post through the holes in the Side Posts, if desired secure in place with glue.

Sign

1. Glue the Frame onto the Back piece. Allow to dry.
2. Glue the Sign piece in place onto the Sign. Allow to dry.
3. Thread ribbon or string through the holes on the Sign and then loop around the Top Post to hang in place.

Rabbit Shelves

Finished size -

23 inches x 11 inches

Construction Board Shelf

- 1 x Back
- 1 x Rabbit Front
- 2 x Shelf
- 2 x Side
- 2 x Top and Base
- 1 x Rabbit Face

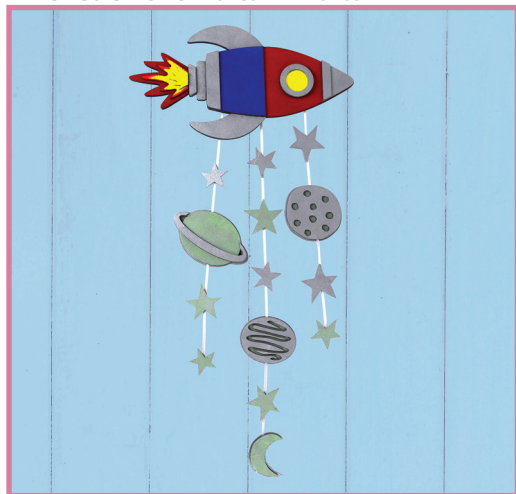
Cut as many Embellishments as desired.

1. Glue the layers of construction board together to create all of the sections. Allow to dry.
2. Cover each section on both sides with card or paint. Allow to dry.
3. Use an alcohol marker or paint to colour the edges of each section.
4. Glue the Side pieces onto the side of the Back piece.
5. Glue the Top and Base pieces onto the remaining sides of the Base.
6. Glue the Rabbit Front onto the Front of the Sides and Top and Base pieces.
7. Glue the Rabbit Face onto the front of the Rabbit Front.
8. Decorate with Embellishments.



Rocket Wall Hanging

Finished size - 3 inches x 7 inches



Cutting List

Construction board

1 x Rocket Base

1 x Rocket Mats

1 x Back 1

1 x Back 2

Cut as many Moons, Stars and Planets as desired.

Cut all of the above from card or patterned paper as well.

Additional Items

Ribbon or string

1. Glue the layers of construction board together to create all of the sections. Allow to dry.
2. Cover each section on both sides with card or paint. Allow to dry.
3. Use an alcohol marker or paint to colour the edges of each section.
4. Align the Rocket Mats on top of the Rocket and glue in place.
5. For each of the Moon, Stars and Planets, layer up the pieces and glue in place.
6. Cut various lengths of ribbon, string or twine, which will hang from the Rocket and the Moon, Stars and Planets will attach to.
7. Attach the Moon, Stars and Planets onto the ribbon, string or twine. Allow to dry.
8. Glue the Back pieces together and attach onto the back of the Rocket. Allow to dry.

Shadow Boxes

Finished size - 9.14 inches x 9.14 inches



Frame

Cutting List

- 1 x either Back 1 or 2
- 4 x Frame

1. Taking one of the Frame pieces, fold along the score lines and glue the tabs in place to create an angled rectangular box. Repeat to make all four sides of the Frame.
2. Align the Frame onto one of the Back pieces and glue in place.
3. For extra strength cut the Back piece multiple times and glue onto the back of the Frame.

Fairy Tale Castle

Cutting List

- 1 x Back 1
- 1 x Back 2
- 1 x Castle 1-5
- 1 x Grass

- 1 x Path
- 1 x Princess
- Cut as many Bushes, Clouds, Flowers and Trees as desired.

Additional Items

- LED String Lights
- Foam Tape
- Velcro

1. Taking the Grass piece glue onto the bottom edge of Back 2.
2. For each of the Castle layers, glue the mats and decorations in place onto the corresponding layer. Allow to dry.
3. Place foam tape onto the reverse of each layer and align in place on top of the other and attach in place.
4. Align the Castle in place on top of Back 2 and attach in place.
5. Layer up and glue the Princess together. Attach the Princess in place into the Fairy Tale Castle scene.
6. Decorate the scene with Bushes, Clouds, Flowers, the Path and Trees.
7. Glue Back 1 in place onto the

inside of the Frame.

8. Taking the lights, push the lights through the hole in the back of the Frame. Arrange the lights in the frame and attach in place. Allow room around the outside edge to be able to attach the scene. Ensure to keep the battery pack on the outside of the frame.
9. Attach the Fairy Tale Castle Scene onto the inside of the Frame over the lights with foam tape.
10. Place Velcro onto the back of the battery pack and attach onto the back of the Frame.

Medieval Castle

Cutting List

- 1 x Back 1
- 1 x Back 2
- 1 x Castle 1-3
- 1 x Grass
- 1 x River and Path
- 1 x Knight
- 1 x Dragon

Cut as many Bushes, Clouds, Flowers and Trees as desired.

Additional Items

- LED String Lights
- Foam Tape
- Velcro

1. Taking the Grass piece glue onto the bottom edge of Back 2.
2. For each of the Castle layers, glue the mats and decorations in place onto the corresponding layer. Allow to dry.
3. Place foam tape onto the reverse of each layer and align in place on top of the other and attach in place.
4. Align the Castle in place on top of Back 2 and attach in place.
5. Attach the River and Path in place into the scene.
6. Layer up and glue the Knight together. Attach the Knight in place into the Medieval Castle scene.
7. Decorate the scene with Bushes, Clouds, and Trees and the Dragon.
8. Glue Back 1 in place onto the inside of the Frame.
9. Taking the lights, push the lights through the hole in the back of the Frame. Arrange the lights in the Frame and attach in place. Allow room around the outside edge to be able to attach the scene. Ensure to keep the battery pack on the outside of the Frame.

10. Attach the Medieval Castle Scene onto the inside of the Frame over the lights with foam tape.

11. Place Velcro onto the back of the battery pack and attach onto the back of the Frame.

Space

Cutting List

1 x Back 1

1 x Back 2

1 x Astronaut

1 x Explore the Universe

1 x Front

1 x Moon

1 x Planet

1 x Rocket

Additional Items

LED String Lights

Foam Tape

Velcro

1. Taking each of the Astronaut, Moon, Planet and Rocket pieces. Layer each one up and glue in place.

2. Attach the Moon onto the right-hand corner of Back 2.

3. Arrange the Astronaut, Planet and Rocket onto Back 2 and attach in place with foam tape.

4. Align the Front on top of the Space scene and attach in place with foam tape.

5. Taking the Explore the Universe words, glue in place onto their corresponding mats. Allow to dry.

6. Attach the sentiment in place onto the front of the scene.

7. Glue Back 1 in place into the Frame. Allow to dry.

8. Taking the lights, push the lights through the hole in the back of the Frame. Arrange the lights in the frame and attach in place. Allow room around the outside edge to be able to attach the scene. Ensure to keep the battery pack on the outside of the frame.

9. Attach the Space scene onto the inside of the Frame over the lights with foam tape.

10. Place Velcro onto the back of the battery pack and attach onto the back of the Frame.

Tea Set

Finished size - Teapot - 6 inches x 10 inches,
Teacup - 2 2.12 inches x 3 inches, Saucer - 4.11 inches x 4.11 inches



Teacup 1 or 2

Cutting List

- 1 x Base
 - 1 x Handle
 - 1 x Inside Mat
 - 1 x Outside Mat
 - 1 x Side
 - 1 x Trim
1. Taking the Base piece, attach onto the Side piece using the tabs. Glue the side tab on the Side piece in place. Allow to dry.
 2. Glue the Mats in place. Allow to dry.
 3. Glue the Trim in place around the top edge of the Cup. Allow to dry.
 4. Glue one end of the Handle piece onto the Cup. Curl the other end of the Handle and glue in place. Allow to dry.

Teapot

Cutting List

- 1 x Base
- 1 x Lid Base
- 1 x Lid Side
- 1 x Lid Top
- 1 x Spout Base
- 1 x Spout Side
- 1 x Spout Top
- 6 x Teapot Side 1 Mat
- 6 x Teapot Side 1
- 1 x Teapot Side 2
- 1 x Handle Inside
- 1 x Handle Outside
- 1 x Handle Sides

Teapot

1. Glue the Side 1 and 2 Mats onto the corresponding piece.
2. Glue each Teapot Side 1 piece

onto the Base piece, glue the side with three tabs on to the Base.

Allow to dry.

3. Fold each Side 1 piece up and glue onto the corresponding side, to form the Teapot. Allow to dry.
4. Glue Side 2 on to the Teapot. Allow to dry.

Lid

1. Glue the Lid Side piece onto Lid Top. Glue the side tab in place. Allow to dry.
2. Glue the Lid Base in place. Allow to dry.

Spout

1. Taking one tab at a time, glue the Spout Top piece onto one of the Spout Side pieces. Allow to dry.
2. Glue the other Spout Side piece onto the tabs on the Top piece. Allow to dry.
3. Glue the Spout Base piece in place, gluing one tab at a time. Allow to dry.
4. Glue the Spout onto the Teapot.

Handle

1. Taking one tab at a time, glue the Handle Outside piece onto one of the Handle Side pieces. Allow to dry.
2. Glue the other Handle Side piece onto the tabs on the Outside piece. Allow to dry.
3. Glue the Handle Inside piece in place, gluing one tab at a time. Allow to dry.
4. Glue the Handle onto the Teapot.

Saucer Cutting List

1 x Base
1 x Side
1 x Side Mat
1 x Trim

1. Taking the Base piece, attach onto the Side piece using the tabs. Glue the side tab on the Side piece in place. Allow to dry.
2. Glue the Side Mat in place. Allow to dry.
3. Glue the Trim in place around the top edge of the Saucer. Allow to dry.

Tepee

Finished size - 21 inches x 15 inches



Cutting List

2 x Base
2 x Base Mat 1
2 x Base Mat 2
2 x Base Mat 3
1 x Base Mat 4
2 x Door
2 x Door Mat
2 x Side 1
2 x Side 1 Mat 1
2 x Side 1 Mat 2
2 x Side 1 Mat 3
1 x Side 2
2 x Side 2 Mat 1
2 x Side 2 Mat 2
2 x Side 2 Mat 3
1 x Side 3
2 x Window
42 x Eyelet

Additional Items

Ribbon or cord
2 x Brads

1. Glue the two Base pieces together, along the tab. Allow to dry.
2. Glue the corresponding Side Mat pieces onto the Side piece. Allow to dry.
3. Starting with one of the Side 1 pieces, glue the base tab onto one side of the Base piece. Allow to dry.
4. Repeat step 2, gluing a Side 2 piece, then another Side 2 piece and then Side 3. The final two sides will be where the Door sits.
5. Glue the Base Mat 1 in place over the tabs on the Base. Glue the other Base Mat pieces in place. Allow to dry.
6. Taking one side at a time, glue the corresponding tab onto the next

side. Allow to dry.

7. Taking one of the Door pieces, glue the tab onto one of the Side pieces. Allow to dry. Repeat with the other Door piece.
8. Glue the Window mat pieces in place. The solid piece glues just at the top over the window, roll the rest of the piece up and glue in place.
9. Glue Base Mat 4 in place centrally inside the Tepee.
10. Glue the Door Mats in place, as they dry gently curve the Doors so they can be folded round and secured in place open.
11. Glue the Eyelets in place on both sides of the Doors.
12. Thread a length of ribbon or cord through the holes in the top of the Doors.
13. Curve the bottom half of the Doors round so they look to be open and secure in place with a Brad on each Door.
14. To decorate stencil the Tepee Stencils onto the outside.

Toybox

Finished size - 11 inches x 18 inches



Cutting List

Construction Board

- 1 x Back
- 1 x Base
- 1 x Front
- 1 x Front Mat 1
- 1 x Front Mat 2
- 1 x Lid
- 1 x Lid Mat
- 2 x Side

Cut all of the above twice from card or patterned paper.

1. Glue the layers of construction board together to create all of the sections. Allow to dry.
2. Cover each section on both sides with card or paint. Allow to dry.
3. Use an alcohol marker or paint to colour the edges of each section.
4. Glue the Lid Mat onto the Lid. Allow to dry.
5. Glue Front Mat 1 onto the Front. Glue Front Mat 2 on top of Front Mat 1. Allow to dry.
6. Glue one Side piece onto the side of the Base. Slot one of the Lid pieces into the hole on the Side piece. Allow to dry.
7. Glue the other Side piece onto the side of the Base, making sure the Lid is slotted into this piece as well. Allow to dry.
8. Glue the Back piece the same side as the taller side of the Sides. Allow to dry.
9. Glue the Front onto the remaining side. Allow to dry.

Village and Car

Finished size - Car - 2 inches x 3.8 inches, House 1 - 6.4 inches x 4.8 inches, House 2 - 10.12 inches x 6.2 inches, House 3 - 8.6 inches x 4.8 inches



Note- The Houses are also money boxes and can be lifted away from the Base to allow access to the money.

Cutting List

For each House and Car cut either the construction board or the card version.

House 1

Construction board version

1 x Back

1 x Base

1 x Inset Base

1 x Front

1 x Roof 1

1 x Roof 2

2 x Side

Cut as many Embellishments as desired.

Cut all of the above twice from card or patterned paper.

Card version

1 x Back

1 x Front

1 x Back Mat

1 x Base Mat

1 x Front Mat

1 x Roof Mats

2 x Side Mat

Embellishments as desired

House 2

Construction board version

1 x Back

1 x Base

1 x Inset Base

1 x Front

1 x Roof 1

1 x Roof 2

2 x Side

Cut as many Embellishments as desired.

Cut all of the above twice from card or patterned paper.

Card version

1 x Back

1 x Base

1 x Front

1 x Back Mat

1 x Base Mat

1 x Front Mat

1 x Roof Mats

2 x Side Mat

Cut as many Embellishments as desired.

House 3

Construction board version

1 x Back

1 x Base

1 x Inset Base

1 x Front

1 x Front Roof

1 x Roof 1

1 x Roof 2

2 x Side

Cut as many Embellishments as desired.

Cut all of the above twice from card or patterned paper.

Card version

1 x Back

1 x Front
1 x Back Mat
1 x Base Mat
1 x Front Mat
1 x Roof Mats
2 x Side Mats
Cut as many Embellishments
as desired.

Car

Construction board version

4 x Middle
2 x Sides
8 x Wheel
Cut as many Embellishments
as desired.

Cut all of the above from card or
patterned paper.

Card version

1 x Car
1 x Mats
4 x Wheel

Additional Items

Dowel

Houses

**All the Houses build in the same
way, so follow the instructions
below.**

Construction board version

1. Glue the layers of construction board together to create all of the sections. Allow to dry.

2. Cover each section on both sides with card or paint. Allow to dry.
3. Use an alcohol marker or paint to colour the edges of each section.
4. Glue the Inset Base onto the Base and put to one side.
5. Glue the Side pieces onto the inside of the Front and Back pieces. Line up the Side pieces with the bottom of the Front and Back pieces, as there is a small gap at the top to allow the Roof to fit.
6. Glue the Roof pieces on top of the Front and Back pieces, Roof 2 is 4mm wider than Roof 1, so overlap this over Roof 1 to create the point at the top of the Roof.
7. Place the House on top of the Base piece, this allows the House to be removable to get anything that is put inside.

Card version

1. Cut out all the pieces and decorate them as desired.
2. Fold along the score lines on the Front, Back and Side pieces and glue together to form the House. Do not glue the Base tab so you can open the house at a later date.

3. Glue the Mats in place onto the inside as the House.
4. The Base of the Card Houses should open, so on House 2 glue the tab to the Front of the House so it can tuck into the tab on the Back.

Car

Construction board version

1. Glue the layers of construction board together to create all of the sections. Allow to dry.
2. Layer up and glue the Middle pieces together. Allow to dry.
3. Cover each section with card or paint. Allow to dry.
4. Use an alcohol marker or paint to colour the edges of each section.
5. Glue the Sides onto either side of the Middle pieces.
6. Push a length of Dowel through the holes in the Car. Slot the Wheels onto either end of the Dowel. Trim the Dowel to fit the Wheels. Glue the Wheels onto the Dowel.

and begin gluing them around the shape of the Car. Add in Mats for strength.

2. For each Wheel, glue the rectangle with tabs on around each end of the circles to make the Wheel. Allow to dry. Repeat to make three more Wheels.
3. Push a length of Dowel through the holes in the Car. Slot the Wheels onto either end of the Dowel. Trim the Dowel to fit the Wheels. Glue the Wheels onto the Dowel.

Card version

1. Fold the tabs on the Car piece

Fonts

Jelly Bean

Drawing

A B C D E F G H I J K L M N 1 2 3 4 5
O P Q R S T U V W X Y Z 6 7 8 9 0
a b c d e f g h i j k l m n ! ? , &
o p q r s t u v w x y z

Cutting

A B C D E F G H I J K L M N 1 2 3 4 5
O P Q R S T U V W X Y Z 6 7 8 9 0
a b c d e f g h i j k l m n ! ? , &
o p q r s t u v w x y z

Tiny Tot

Drawing

A B C D E F G H I J K L M N 1 2 3 4 5
O P Q R S T U V W X Y Z 6 7 8 9 0
a b c d e f g h i j k l m & - ?
n o p q r s t u v w x y z . , !

Cutting

A B C D E F G H I J K L M N 1 2 3 4 5
O P Q R S T U V W X Y Z 6 7 8 9 0
a b c d e f g h i j k l m & - ?
n o p q r s t u v w x y z . , !

Stencils

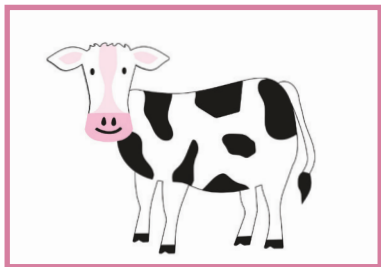
Some of the Stencils on this USB are designed to layer up to create more intricate patterns, use them individually or together for different effects on projects.

Embellishment Toolbox

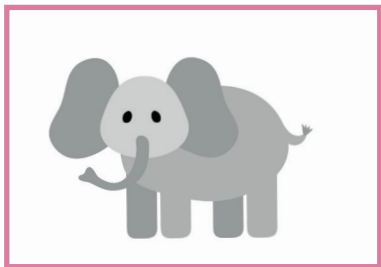
Contained on the Mini Maker's Toybox USB is the Embellishment Toolbox. This is a collection of small designs and pieces we have used throughout the USB to decorate the projects and designs.

When making the projects, please use the embellishments contained to personalise and decorate your own projects.

Animals



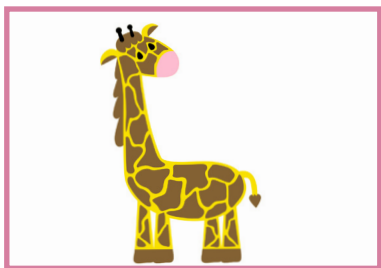
Cow



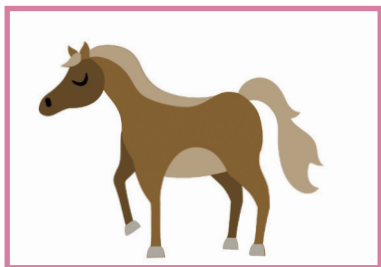
Elephant



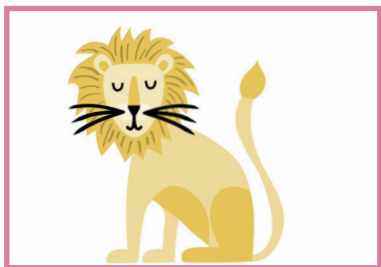
Giraffe 1



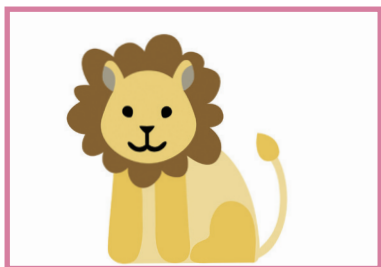
Giraffe 2



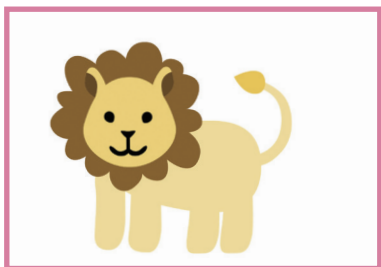
Horse



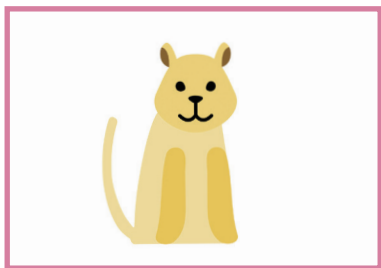
Lion 1



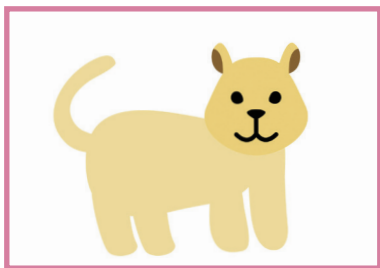
Lion 2 a



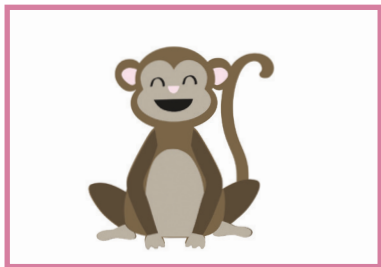
Lion 2 b



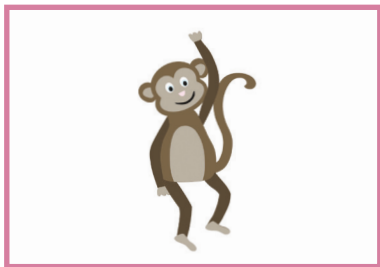
Lion 3 a



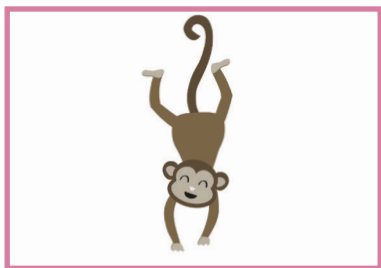
Lion 3 b



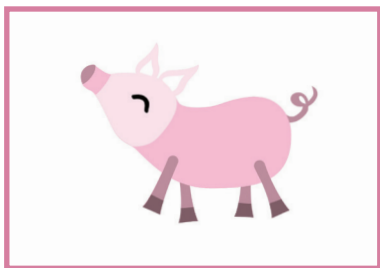
Monkey 1



Monkey 2



Monkey 3



Pig 1



Pig 2



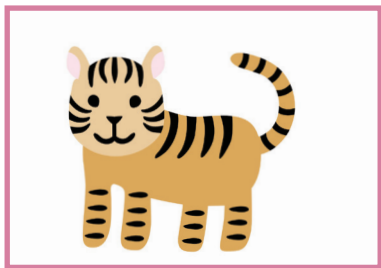
Sheep



Tiger 1



Tiger 2 a



Tiger 2 b

