

Occasions



INSTRUCTION BOOKLET

The Cutting Craftorium Collection

Have you got them all?

Alphabet

Romance Vol.1

Easter

Celebrations

Home Sweet Home

Romance Vol.2

Daydreaming

Christmas Vol.2

Play

Pop

Decorative Dimensions
Vol.2

Days Out

Spring

Love Is In The Air

Daydreaming 2

Shopaholic

Making Me Time

Sunshine Days

Feeling Festive

Pretty And Purposeful

Tea and Cakes

Trick Or Treat

Ephemera

Pretty and
Purposeful 2

Just My Type

Just Be Mine

Pretty and
Purposeful 3

Complete Card Making

Free Time

Ephemera 2

Christmas Selection
Box

Build a Botanical

Craft Room Secrets

Christmas
Compendium

Millinery and More

Mini Maker's Toybox

NEW!

Occasions

Contents

<u>Projects</u>	<u>Page</u>	<u>Place Card</u>	23
Flower Arch	5-6	Invite	24
Happily Ever After Frame	6-7	Anniversary Card	25
Home Sweet Home Frame	7-8	Engagement Card	25
Lantern Centre Piece.....	8-9	Get Well Soon Card	26
Bunting	9	New Baby Card.....	26
Table Light.....	10-11	Graduation Card	27
String Lights.....	11-12	New Home Card	28
Photo Booth Props ..	12-13	Passed Driving Test Card	28
Wedding Message Heart	14	Retirement Card.....	29
Anniversary Gift Box	15	Sympathy Card.....	29
Engagement Gift Bag ...	16	Thank You Card	30
Get Well Soon Gift Box.....	17	Wedding Card	30
New Baby Gift Box	18	Well Done Shaker Card	31
New Home Gift Bag	19	Envelopes	32
Wedding Favour Box	20	Bouquet.....	33
Wedding Gift Box.....	21	Celebration.....	34
Gift Tags.....	22	Welcome	35
Bottle Tag	23		

Designer Tips

Some of the projects within the book use construction board.

Where possible we have included how to make these projects using card.

If you are using 750 micron construction board you will need to cut 4 layers of each section. If you are using 1000 micron construction board you will need to cut 3 layers of each section.

Working with construction board

You will need:

A sanding block

A good PVA glue

An alcohol marker to colour the edges of each section

Patterned papers from the USB or from your stash

Once you have cut and glued your construction board layers together you can then cover them with patterned paper before assembling.

Make sure you let each section dry before moving on to the next.

Flower Arch

Finished size - 16.5 inches x 10.5 inches



Cutting List

**Cut either the 12x12
or the 12x24 version**

2 x Arch Mat
4 x Arch
1 x Base
2 x Base Mat
2 x Heart
1 x Side 1
1 x Side 1 Mat
1 x Side 2
1 x Side 2 Mat
1 x Side 3
1 x Side 3 Mat
1 x Side 4
1 x Side 4 Mat

Cut as many Flowers,
Leaves and Foliage as
desired to decorate.

1. To build the Arch, lay out all of the Side pieces in order and glue them together where the tabs overlap onto the border of the corresponding piece, to create one Side piece.
2. Starting with Side 1, glue the tabs on the side onto one of the Arch pieces. Allow to dry.
3. Continue gluing all the tabs on the same side onto the Arch. Allow to dry.
4. Glue the other Arch in place onto the other tabs on the Side pieces. Allow to dry.
5. Glue the other Arch pieces in place on top of the tabs.
6. Glue the Base piece in place. Allow to dry.
7. Glue the Base Mats in place onto either side of the Base piece.
8. Glue the Side Mats in place. Allow to dry.

9. To give the Arch more strength, cut out and glue multiple Arch and Side Mat pieces in place.
10. Layer up and glue one set of the Heart pieces. Allow to dry.
11. Glue the Heart in place, centrally onto one side of the Arch.
12. Repeat steps 10 and 11 with the other Heart.
13. Decorate the Arch with Flowers, Leaves and Foliage, along with LED Lights.

Happily Ever After Frame

Finished size - 11.5 inches x 9 inches



Cutting List

- 1 x Back
- 1 x Frame Back
- 1 x Frame Mat 1
- 1 x Frame Mat 2 or 3
- 2 x Frame Side
- 2 x Frame Top and Bottom
- 1 x Mat 1
- 1 x Mat 2
- 1 x Mat 3
- 1 x Mat 4
- 1 x Mat 5

Additional Items

- Foam Tape
- LED Lights

1. To build the Frame, take each of the Frame Top and Bottom and Side piece, fold along the score lines and glue the tabs in place to form each side of the Frame. Allow to dry.
2. Glue one of the Frame Top and Bottom pieces in place onto the Frame Back. Allow to dry. Ensure the hole in the Frame Back piece is in the left-hand corner.

3. Next, glue the two Frame Side pieces in place onto the Frame Back underneath the Frame Top. Allow to dry.
4. Glue the Frame bottom in place. Allow to dry.
5. Align the Back piece in place into the Frame and glue. Allow to dry.
6. Glue the Frame Mat 1 in place on top of the Frame. Allow to dry.
7. Glue either Frame Mat 2 or 3 in place. Allow to dry.
8. Taking each of the Mats place foam tape onto the reverse and layer them up in ascending order. Glue Mat 2 onto Mat 1, allow to dry.
9. Taking the LED Lights, feed the lights through the hole in the back of the Frame. Align the Mats in place into the Frame and then arrange the lights to sit behind the Mats. Take out the Mats and secure the lights in place.
10. Attach the Mats in place into the Frame.

Home Sweet Home Frame

Finished size - 11.5 inches x 9 inches

Cutting List

- 1 x Back
- 1 x Frame Back
- 1 x Frame Mat 1
- 1 x Frame Mat 2 or 3
- 2 x Frame Side
- 2 x Frame Top and Bottom
- 1 x Mat 1
- 1 x Mat 2
- 1 x Mat 3

Additional Items

- Foam Tape
- LED Lights



1. To build the Frame, take each of the Frame Top and Bottom and Side piece, fold along the score lines and glue the tabs in place to form each side of the Frame. Allow to dry.
2. Glue one of the Frame Top and Bottom pieces in place onto the Frame Back. Allow to dry. Ensure the hole in the Frame Back piece is in the left-hand corner.
3. Next, glue the two Frame Side pieces in place onto the Frame back underneath the Frame Top. Allow to dry.
4. Glue the Frame bottom in place. Allow to dry.
5. Align the Back piece in place into the Frame and glue. Allow to dry.
6. Glue the Frame Mat 1 in place on top of the Frame. Allow to dry.
7. Glue either Frame Mat 2 or 3 in place. Allow to dry.
8. Taking each of the Mats place foam tape onto the reverse and layer them up in ascending order.
9. Taking the LED Lights feed the lights through the hole in the back of the Frame. Align the Mats in place into the Frame and then arrange the lights to sit behind the Mats. Take out the Mats and secure the lights in place.
10. Attach the Mats in place into the Frame.

Lantern Centre Piece

Finished size - 6.5 inches x 3 inches



Cutting List

- 1 x Lantern
- 6 x Side Mat
- 6 x Embellishment Mat
- 1 x Door
- 2 x Top and Base
- 1 x Top
- 2 x Top Base
- 1 x Top Side
- 1 x Top Side Mat

Additional Items

6 x Window cut from Acetate

Cut any additional Flowers, Leaves and Foliage to embellish the Lantern.

1. Cut out all the pieces and decorate them as desired.
2. Take the Lantern piece and fold along the serration lines and glue it together using the tabs.
3. Glue five of the Window pieces onto the inside of the Lantern sides.
4. Glue five of the Side Mat onto the inside of the Lantern sides.
5. Glue five of the Embellishment Mats onto the outside of the Lantern sides.
6. Glue the Window, Side Mat and Embellishment on either side of the Door.
7. Glue the Door onto the Lantern, with the Embellishment Mat facing the outside.
8. Fold the Top and Base pieces and glue them together using the tabs.
9. Glue one Top and Base piece to the bottom of the Lantern and one to the Top.
10. Glue the Top Side to one of the Top Base pieces.
11. Glue the Top piece onto the Top Side piece.
12. Glue the Top Side Mat onto the Top Side.
13. Glue the second Top Base piece onto the other Top Base piece, to hide tabs and strengthen.
14. Glue the whole Top piece to the top of the Lantern.

Bunting

Finished size - 5 inches x 5.5 inches



Table Light

Finished size - 9 inches x 9 inches



Cutting List

Vellum

20 x Vellum

Card

20 x either Heart Circle
1 or 2 or Star Circle 1
or 2

20 x either Heart Circle
1 or 2 or Star Circle 1 or
2 Mats

Additional Items

LED Lights

Ribbon or string

Pearls

1. To make each light, take each of the Circle pieces and fold along the score lines, folding the edges upwards. Attach a piece of vellum onto the back of each Circle piece.



- 10, alternate the triangle to point upwards, then downwards.



2. To build each light ball, make three strips of the circles to form a panel. Glue a strip of five, then ten and then another five. Glue the circles together where the semi-circles are folded. For the strip of

3. Starting with one of the strips of fives, fold it round to form the top of the ball and glue in place. Allow to dry.



- Repeat step 3 with the strip of ten, gluing the panels to the top of the ball.

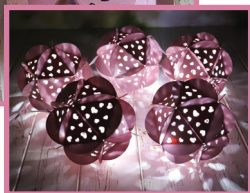


- Glue the final strip in place onto the ball. Before gluing the final panel in place, thread the LED Lights inside the light, leaving the switch on the outside. Glue the final panel in place.



String Lights

Finished size - 1 Light - 4.5 inches x 5 inches



Cutting List Per Ball

Vellum

20 x Vellum

Card

20 x either Heart Circle 1 or 2 or Star Circle 1 or 2

20 x either Heart Circle 1 or 2 or Star Circle 1 or 2 Mats

Additional Items

LED Lights

Ribbon or string

- To make each light, take each of the Circle pieces and fold along the score lines, folding the edges upwards. Attach a piece of vellum onto the back of each Circle piece.
- To build each light ball, make three strips of the circles to form a panel. Glue a strip of five, then ten and then another five. Glue the circles together where the semi-

circle are folded. For the strip of 10, alternate the triangle to point upwards, then downwards.

- Starting with one of the strips of fives, fold it round to form the top of the ball and glue in place. Allow to dry.
- Repeat step 3 with the strip of ten, gluing the panels to the top of the ball.
- Glue the final strip in place onto the ball. Before gluing the final panel in place, thread the LED Lights inside the light, leaving the switch on the outside. Glue the
- each ribbon pieces onto a longer piece of ribbon to hang the lights from. Allow to dry.
- Alternatively, hole punch a hole into two of the semi-circle panel pieces on each light and thread ribbon through the holes to create a string of lights.

final panel in place.

Photo Booth Props

Finished size - Box - 4.5 inches x 10 inches Frame - 11 inches x 9.5 inches

Cutting List

Box

Construction board version

- 1 x Base
- 2 x Front and Back Mat
- 2 x Front and Back
- 1 x Props
- 2 x Side Mat
- 2 x Side

Cut all of the above twice from patterned paper and card.



Card version

- 1 x Base Mat
- 1 x Base
- 2 x Front and Back Mat
- 4 x Front and Back
- 1 x Props
- 2 x Side Mat 1
- 2 x Side Mat 2
- 2 x Side

Cut Props as desired.

Box

Construction Board Version

1. Glue the layers of construction board together to create all of the sections. Allow to dry.
2. Cover each section on both sides with card or paint. Allow to dry.
3. Use an alcohol marker or paint to colour the edges of each section.
4. Glue the Side pieces in place onto the edge of the Base. Allow to dry.
5. Glue the Front and Back in place onto the edge of the Base and Side pieces. Allow to dry.
6. Glue the Mats in place onto the Box. Allow to dry.
7. Glue the word Props onto the front of the box.

Card Version

1. Glue two of the Side pieces in place onto the tabs on the Base. Allow to dry.
2. Glue two of the Front and Back in place onto the tabs on the Base and Side pieces. Allow to dry.
3. Glue the remaining Front and Back and Side pieces and the Base Mat in place onto the inside of the Box to cover the tabs and add extra strength. Allow to dry.
4. Glue the Mats in place onto the outside of the Box. Allow to dry.
5. Glue the word Props onto the front of the box.

Props

1. For each of the Props layer up and glue the pieces of the Prop together.
2. Attach the Prop onto a BBQ skewer or a length of Dowel.

Photo Frame

1. Cut one of the Frame pieces either from construction board or several layers of card for strength.
2. Decorate the frame with embellishments from the Toolbox or Flowers and Leaves.

Wedding Message Heart

Finished size - 11 inches x 11 inches



Cutting List

Construction Board

- 2 x Heart
- 1 x Inside Heart
- 1 x Stand

Card

- 1 x Happily Ever After
- 1 x Heart Mat
- 1 x Flowers
- 1 x Wreath Mat

Additional Items

- 2 x Acetate Heart cut from Acetate

Cut as many Message Hearts as desired either from a couple of layers construction board or card.

1. Glue the layers of construction board together to create all of the sections. Allow to dry. More layers might need to be cut for the Inside Heart or the Heart and Stand to ensure the Heart will fit securely when standing.
2. Cover each section on both sides with card or paint. Allow to dry.
3. Use an alcohol marker or paint to colour the edges of each section.
4. Glue each of the Acetate pieces onto the back of the Heart pieces. Allow to dry.
5. Glue the Inside Heart in between the two Heart pieces. Allow to dry.
6. Glue the Happily Ever After onto one side of an Acetate piece.
7. On the same side glue, the Heart and Wreath Mats onto the front of the heart. Allow to dry.
8. Glue the Flowers in place onto the Wreath.
9. Slot the Heart into the Stand and glue in place if desired.
10. Write messages onto the Message Hearts and slot into the Heart.

Anniversary Gift Box

Finished size - 9 inches x 7.25 inches



Cutting List Box

- 1 x Base Solid Mat
- 1 x Base
- 2 x Side 1 Mat
- 2 x Side 1
- 1 x Side 2 Mat
- 1 x Side 2

Lid

- 1 x Top
- 1 x Top Solid Mat
- 1 x Inside Mats
- 2 x Side 1
- 2 x Side 1 Mat
- 1 x Side 2
- 1 x Side 2 Mat
- 1 x Mat 1
- 1 x Mat 2
- 1 x Lock

1. Cut out all the pieces and decorate them as desired.
2. Glue the Side 1 and Side 2 around the Base. Glue the corresponding Side Mats onto the Sides.
3. Glue the Base Solid Mat onto the bottom of the Base.
4. To build the Lid, glue the Lid Side 1 pieces and the Lid Side 2 piece around the Top Solid Mat.
5. Glue the corresponding Lid Side Mats to the Lid Side pieces.
6. Glue the Top piece on top of the Top Solid Mat, sandwiching the tabs.
7. Glue Lid Mat 1 on top of the Top. Glue Lid Mat 2 on top of that.
8. Glue the Lock on top of Lid Mat 2 centrally.

Engagement Gift Bag

Finished size - 7.5 inches x 9 inches



Cutting List

- 2 x Base
- 2 x Front and Back
- 2 x Front and Back Mat
- 2 x Side
- 2 x Side Mat
- 2 x Embellishment Mat 1
- 2 x Embellishment Mat 2
- 2 x Embellishment Mat 3
- 2 x Embellishment Mat 4
- 2 x Rings

1. Cut out all the pieces and decorate them as desired.
2. Glue the Front and Back pieces to either side of one of the Base pieces.
3. Glue the Side pieces onto the remaining sides of the Base. Using the tabs, glue the Side pieces to the Front and Back pieces. Shape the Side pieces to the edge of the Front and Back pieces.
4. Glue the Front and Back Mat, Side Mat and the second Base piece onto the inside of the corresponding pieces to hide tabs and add strength.
5. Starting with Embellishment Mat 1 and finishing with Embellishment Mat 4 stick all the Embellishment Mat pieces onto the outside of the Front and Back pieces.
6. On top of the Embellishment Mats, glue on the Rings.
7. Cut 2 equal lengths of Ribbon or String. Thread these through the holes on the Front and Back pieces and tie them to secure.

Get Well Soon Gift Box

Finished size - 6.5 inches x 5.5 inches



Cutting List

- 2 x Base
- 2 x Side
- 2 x Side Mat
- 2 x Lid Top
- 2 x Lid Side
- 2 x Lid Side Mat
- 1 x Lid Mat 1
- 1 x Lid Mat 2
- 1 x Lid Mat 3

1. Cut out all the pieces and decorate them as desired.
2. Glue the Side pieces around one of the Base pieces.
3. Glue the Side Mats onto the Sides, and glue the other Base piece onto the other to hide tabs and add strength.
4. Glue the Lid Side pieces onto one of the Lid Top pieces.
5. Glue the Lid Side Mat pieces onto the Lid Sides and the second Lid Top onto the other Lid Top piece to hide tabs and add strength.
6. Starting with Lid Mat 1 and finishing with Lid Mat 2, glue all the Lid Mats onto the top of the Lid Top.

New Baby Gift Box

Finished size - 9 inches x 11 inches



Cutting List

2 x Base
2 x Front and Back
2 x Front and Back Mat
2 x Side
2 x Side Mat
1 x Lid Top
1 x Lid Top Mat
1 x Lid Front 1 or 2
1 x Lid Front 1 or 2 Mat
Embellishments as desired

1. Cut out all the pieces and decorate them as desired.
2. Glue the Front and Back pieces and the Side pieces onto one of the Base pieces.
3. Glue the other Base piece onto the other, covering the tabs.
4. Glue the Lid Top to the Back piece. Onto the front end of the Lid Top piece, glue on Lid Front 1 or 2.
5. Glue the Mats to the corresponding pieces.
6. Add Embellishments as desired.

New Home Gift Bag

Finished size - 7.75 inches x 4 inches



Cutting List

- 1 x Bag Back
- 1 x Bag Front
- 2 x Door
- 2 x Roof
- 4 x Window

1. Cut out all the pieces and decorate them as desired.
2. Fold along the score lines and glue the Bag Front and Bag Back together.
3. Glue the Roof pieces onto either side of the Bag, making sure the circle holes overhang the top of the bag.
4. Glue the Doors and Windows onto both sides of the Bag.
5. Add any other embellishments from the Embellishment Toolbox.
6. Thread two equal pieces of ribbons through the holes and tie them to create handles.

Wedding Favour Box

Finished size - 5 inches x 4 inches



Cutting List

2 x Base

6 x Side

6 x Side Inside Mat

6 x Side Outside Mat

6 x Top Mat

1. Cut out all the pieces and decorate them as desired.
2. Glue the 6 Side pieces around the Base.
3. Glue the Side Inside Mats and the Base piece on the inside of the
4. Glue the Side Outside Mats around the outside of the Box.
5. Glue the Top Mats on top of the Side pieces.

Box to strengthen and hide the tabs.

Wedding Gift Box

Finished size - 11 inches x 11 inches



Cutting List

Box

- 2 x Base
- 2 x Front and Back
- 2 x Side
- 4 x Inside Mat
- 2 x Lid Top
- 2 x Lid Front and Back
- 2 x Lid Side
- 4 x Lid Mat

Embellishments

- 1 x Lid Mat 1

- 1 x Lid Mat 2
 - 1 x Lid Mat 3
 - 1 x Lid Mat 4
 - 1 x Lid Mat 5
 - 4 x Lid Side Mat 1 or 2
- Cut other Embellishments as desired

1. Cut out all the pieces and decorate them as desired.
2. Glue the Side and Front and Back pieces to one of the Base pieces.
3. Glue the other Base piece onto the first Base piece, covering the tabs.
4. Glue the Inside Mat pieces onto the inside of the Front and Back and Side pieces.
5. Glue the Lid Front and Back and the Lid Side pieces to one of the Lid Top pieces.
6. Glue the other Lid Top piece onto the first, covering the tabs.
7. Glue the Lid Mat pieces onto the outside of the Lid Front and Back and Lid Side pieces.
8. Starting with Lid Mat 1 and finishing with Lid Mat 5, glue the Lid Mats on top of the Lid Top.
9. Glue the Lid Side Mat 1 or 2 pieces onto the Lid Front and Back and Lid Side pieces.
10. Add any other embellishments.

Gift Tags



Bottle Tag

Finished size - 4 inches x 2 inches



Place Card

Finished size - 2.5 inches x 3.25 inches



Invite

Finished size - 8.25 inches x 6 inches



Cutting List

Invite

2 x Back

1 x Invite Mat

1 x Invite

1 x either Side 1, 2 or 3

1 x either Side 1, 2 or 3 Mat

Envelope

1 x Back

2 x Side

2 x Top and Bottom

1 x either Top Mat 1, 2 or 3

Invite

1. Cut out all the pieces and decorate them as desired.
2. Taking the Side pieces, glue on either side of one the Back piece. Allow to dry.
3. Glue the other Back piece in place covering the tabs.
4. Glue the Side Mats in place. Allow to dry.
5. For the Invite, glue the Invite Mat onto the Invite.

Envelope

1. Glue the Side pieces onto either side of the Back piece. Allow to dry.
2. Glue the Top and Bottom piece in place onto the Back piece. Allow to dry.
3. Where the Side and Bottom pieces overlap, glue the pieces. Allow to dry.
4. Glue the Top Mat in place onto the Envelope.

Anniversary Card

Finished size - 5 inches x 5 inches



Cutting List

- 1 x Card
- 1 x Front Mat
- 1 x Heart
- 1 x Stem

Engagement Card

Finished size - 5 inches x 7 inches



Cutting List

- 1 x Card
- 1 x Hearts
- 1 x Mat 1
- 1 x Mat 2
- 1 x Mat 3

Get Well Soon Card

Finished size - 7 inches x 5 inches



Cutting List

Construction Board

- 1 x Card
- 1 x Mat 1
- 1 x Mat 2
- 1 x Mat 3
- 1 x Mat 4
- 1 x Sentiment Mat

New Baby Card

Finished size - 5 inches x 5 inches



Cutting List

- 1 x Card
- 1 x Front Mat 1
- 1 x Front Mat 2
- 1 x Front Mat 3
- 1 x Stopper
- 1 x Front Embellishment
- 1 x Elephant
- Star and Moon as desired

Graduation Card

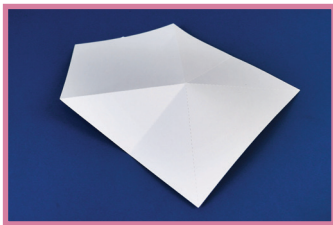
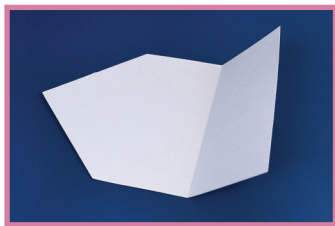
Finished size - 5 inches x 8 inches



Cutting List

- 1 x Card 1
- 1 x Card 2
- 1 x Button
- 1 x Hat Mat
- 1 x Mat Inset Mat
- 1 x Tassel
- 1 x Congratulations
- 1 x Sentiment Mat

1. To fold the Graduation Card, take the Card 2 piece and fold it down the middle on the straight fold line.



3. Fold the other two diagonal fold lines so they form a point. This will form the hat part of the Graduation Card.

2. Fold the two diagonal fold lines above the straight fold line into a point.



New Home Card

Finished size - 7 inches x 5 inches



Cutting List

- 1 x Card
- 1 x Card Inside Mat
- 1 x Key
- 1 x Roof
- 1 x Congratulations on your new home

Passed Driving Test Card

Finished size - 4 inches x 8.25 inches



Cutting List

- 1 x Card
- 1 x Car
- 1 x Learner Plate
- 1 x Road
- 1 x Sentiment

Retirement Card

Finished size - 5 inches x 5 inches



Cutting List

- 1 x Card
- 1 x Banner
- 1 x Sentiment
- 1 x Mat 1
- 1 x Mat 2
- 1 x Mat 3
- Embellishments as desired

Sympathy Card

Finished size - 8.25 inches x 4 inches



Cutting List

- 1 x Card
- 1 x Mat 1
- 1 x Mat 2
- 1 x Mat 3
- 1 x Sentiment

Thank You Card

Finished size - 5 inches x 5 inches



Cutting List

- 1 x Card
- 1 x Flower Wreath Base
- Flowers 1,2,3 as desired

Wedding Card

Finished size - 7 inches x 5 inches



Cutting List

- 1 x Card
- 1 x Heart
- 2 x Jigsaw Piece
- Bride and Groom
- Embellishment as desired

Well Done Shaker Card

Finished size - 5 inches x 7 inches



Cutting List

- 1 x Card
- 1 x Frame
- 2 x Bunting
- 8 x Bunting Mat
- 1 x Well Done
- Shaker Stars as desired

Additional Items

- 1 x Window cut from Acetate
- Foam Tape

Envelopes



DL Envelope

Finished size - 4 inches x 8.5 inches



Rectangle Envelope

Finished size - 5 inches x 7 inches



Square Envelope

Finished size - 5 inches x 5 inches

Bouquet



Fonts

Celebration

Cutting

a b c d e f g h i j k l m 1 2 3 4 5
n o p q r s t u v w x y z 6 7 8 9 0
! ? & , .

A B C D E F G H I J K L M
N O P Q R S T U V W X Y Z

Drawing

a b c d e f g h i j k l m 1 2 3 4 5
n o p q r s t u v w x y z 6 7 8 9 0
! ? & , .

A B C D E F G H I J K L M
N O P Q R S T U V W X Y Z

Welcome

Cutting

abcdefghijklm
nopqrstuvwxyz 12345
67890
,.!?&

ABCDEFGHIJKLMN
OPQRSTUVWXYZ

Drawing

abcdefghijklmn 12345
opqrstuvwxyz 67890
,.!?&

ABCDEFGHIJKLMN
OPQRSTUVWXYZ

