

# Shabby Collectables



INSTRUCTION BOOKLET

# The Cutting Craftorium Collection

Have you got them all?

Easter	Ephemera
Celebrations	Pretty and Purposeful 2
Home Sweet Home	Just My Type
Romance Vol.2	Just Be Mine
Daydreaming	Pretty and Purposeful 3
Christmas Vol.2	Complete Card Making
Play	Free Time
Pop	Ephemera 2
Decorative Dimensions Vol.2	Christmas Selection Box
Days Out	Build a Botanical
Spring	Craft Room Secrets
Love Is In The Air	Christmas Compendium
Daydreaming 2	Millinery and More
Shopaholic	Mini Maker's Toybox
Making Me Time	Occasions
Sunshine Days	Treasured Memories
Feeling Festive	Spring Clean
Pretty And Purposeful	Wanderlust
Tea and Cakes	
Trick Or Treat	

**NEW!**

Shabby Collectables

# Contents

<b><u>Projects</u></b>	<b><u>Page</u></b>	<b>Master Bedroom .....</b>	<b>39-41</b>
<b>Designer Tips .....</b>	<b>4</b>	<b>Nursery .....</b>	<b>42-45</b>
<b><u>Dolls House</u></b>		<b>Reception Room .....</b>	<b>45-47</b>
<b>Pre Cut Dolls House ....</b>	<b>5-7</b>	<b>Single Bedroom .....</b>	<b>48-49</b>
<b>Dolls House .....</b>	<b>8</b>	<b>Study.....</b>	<b>50-53</b>
<b>Modular Dolls House .....</b>	<b>9</b>		
 <b><u>Embellishments</u></b>			
<b>Outside .....</b>	<b>10</b>		
<b>Inside .....</b>	<b>11-15</b>		
 <b><u>Rooms</u></b>			
<b>Bathroom .....</b>	<b>15-19</b>		
<b>Craft Room .....</b>	<b>19-21</b>		
<b>Dining Room .....</b>	<b>22-24</b>		
<b>Dressing Room.....</b>	<b>24-26</b>		
<b>Kids Bedroom.....</b>	<b>27-30</b>		
<b>Kitchen .....</b>	<b>31-35</b>		
<b>Living Room .....</b>	<b>36-38</b>		

# Designer Tips

**Some of the projects within the book use construction board.**

If you are using 750 micron construction board you will need to cut four layers of each section. If you are using 1000 micron construction board you will need to cut three layers of each section.

## **Working with construction board**

### **You will need:**

A sanding block

A good PVA glue

An alcohol marker to colour the edges of each section

Patterned papers from the USB or from your stash or paint

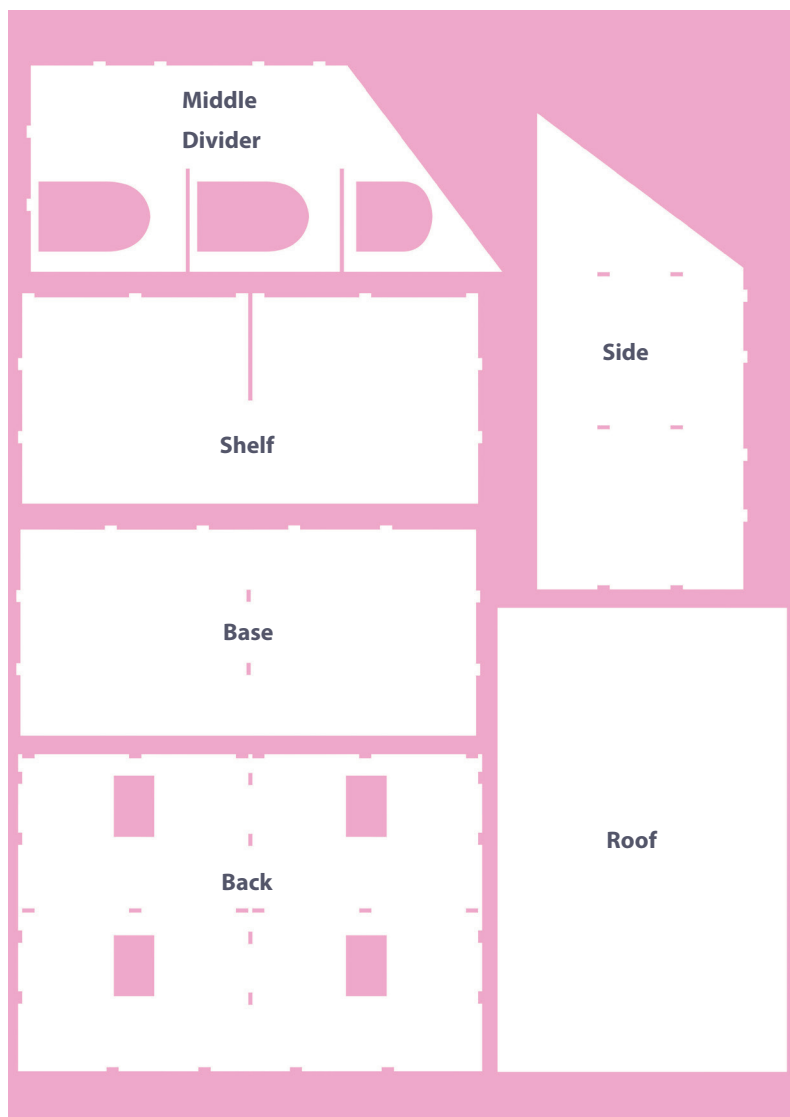
To make any of the Dolls House, Modular Rooms and Furniture which requires construction board, follow the instructions below before assembling.

1. Glue the layers of construction board together to create all of the sections. Allow to dry.
2. Cover each section on both sides with card or paint. Allow to dry.
3. Use an alcohol marker or paint to colour the edges of each section.
4. Make sure you let each section dry before moving on to the next.



# Pre Cut Dolls House





1. Slot the Middle Divider onto the Base and secure with glue.
2. Slot the Back onto the Base and Middle Divider and secure with glue.
3. Slide the Shelves onto the Middle Divider, slotting them in on the Back piece and secure with glue.
4. Slot one of the Side pieces onto the Base and Back, slotting in each of the Shelves and secure with glue.
5. Repeat step 4 for the second Side piece.
6. Glue the Roof onto the top of the Side and Middle Divider pieces, aligning the piece with the top point and letting it overhang at the back.
7. Use the Walls and Floor to paper the inside of the house. The walls are split by room and the same flooring can be used for every room.

Tip - When printing papers for the rooms print the paper landscape and scale it up 150% to fit the wall size on an A4 sheet or print A4 borderless.

# Dolls House

On the USB we have included a resizable Dolls House to be cut on a cutting machine. It will be the same height and depth as the Pre Cut Dolls House but will be thinner due to being sized for a 12 x 24 inch Mat.

## Cutting List

For one half of the Dolls House with six rooms.

## Construction Board

1 x Back OR Back with Windows

1 x Base

1 x Middle Divider OR

Middle Divider with Doors

1 x Roof

4 x Shelf

2 x Side

Cut another set of the cutting list to create the other half and use hinges to attach the two halves together.

Hinges can be bought from any shop that sells DIY supplies.

1. Glue the layers of construction board together to create all of the sections. Allow to dry.
2. Cover each section on both sides with card or paint. Allow to dry.
3. Use an alcohol marker or paint to colour the edges of each section.
4. Glue the Side pieces in place onto the edges either side of the Base.
5. Glue the Back piece in place onto the Sides and Base pieces.
6. Glue the Middle Divider on top of the Base centrally, using the Shelves as a guide.
7. On either side of the Middle Divider, glue in the Shelf pieces to form the rooms. Cut out the Walls files to use as a guide to glue the Shelves in.
8. Glue the Roof onto the Sides and Middle Divider pieces, lining it up with the Top point and letting it overhang at the back.
9. If desired, repeat steps 1-8 to make the other half of the Dolls House.
10. Attach the two halves together using hinges.

# Modular Dolls House



## Cutting List

### Per Room

### Construction Board

The layers of board will need to measure 4mm in depth to slot together perfectly.

- 1 x Back
- 2 x Chosen Side pieces
- 2 x Top and Base

Cut as many Slot on Attachments as desired.

1. Glue the layers of construction board together to create all of the sections. Allow to dry.
2. Cover each section on both sides with card or paint. Allow to dry.

3. Use an alcohol marker or paint to colour the edges of each section.
4. Glue one Side onto one edge of the Base piece, ensuring to line up the notches.
5. Glue the Back in place on to the edge of the Side and Base pieces.
6. Glue the Top piece in place onto the Side and Back pieces.
7. Glue the final Side piece in place onto the Base and Back piece.
8. Repeat steps 1-7 to make more rooms. To join the rooms together, use the Slot on Attachments to hold them together. If desired, glue the rooms together.

# Outside Embellishments

Included on the USB are various different embellishments to decorate and personalise the outside of the house. There are a variety of different Windows, Shutters, a Door, Lattice, Fence and Foliage.

The Roof Tiles for the Pre Cut Dolls House are sized longer than the Roof, so you will arrange the Tiles on the Roof and then cut off the overhanging Tiles.





# Inside Embellishments

## Ceiling Roses



1. For each Ceiling Rose layer up the Ceiling Rose pieces and glue in place.
2. Thread a length of cord or string through the hole and secure in place.
3. Glue the Fitting onto the other side of the Ceiling Rose. Glue together the necessary amount of Fitting pieces, so it is thicker than the cord.
4. Glue onto the ceiling.

## Clocks Mantelpiece Clock 1



### Cutting List

- 1 x Base
  - 1 x Clock Embellishments
  - 2 x Front and Back
  - 1 x Side
1. Taking one of the Front and Back pieces and the Side piece, glue the tabs on the Side piece around

- the Front and Back piece. Allow to dry.
2. Glue the other Front and Back piece in place onto the other tabs on the Side piece. Allow to dry.
  3. Glue the Base in place.
  4. Glue the Clock Embellishments in place onto the front of the Clock.

## Mantelpiece Clock 2



### Cutting List

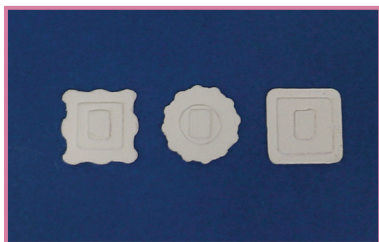
1 x Clock Embellishments

1 x Clock

2 x Top and Base

1. Taking each of the Clock and Top and Base pieces, fold along the score lines on each piece and glue the tabs in place to make three boxes.
2. Glue the Clock Embellishments in place onto the front of the Clock piece.
3. Glue the Top and Base centrally onto the either side of the Clock.

## Light Switches



## Fireplaces



### Cutting List

1 x Back

1 x Base

1 x Fireplace

1 x Inside Mats

1 x Mantelpiece

1 x Mats

1. Fold along the score lines on the Fireplace and glue the tabs in place to form the Fireplace.
2. Glue the longer tab on the Base to the Back piece.
3. Glue the Back piece in place onto the back of the Fireplace.
4. Glue the two smaller tabs on the Base onto the inside of the Fireplace.
5. Layer up and glue the Mats together.
6. Glue the Mats onto the front of the Fireplace.
7. Glue the final tab on the Base in place onto the Mats if making Fireplace 1.
8. Glue the Inside Mats in place covering the tabs.
9. For the Mantelpiece, fold along the score lines and glue the tabs in place.
10. Glue the Mantelpiece in place on top of the Fireplace, aligning with the back. The Mantelpiece overhangs on the front and sides of the Fireplace.

## Lampshades



On each Lampshade either attach onto the cord on a Ceiling Rose or thread cord through the hole and secure in place onto the lampshade and ceiling.

### Lampshades 1-3

Gently curve the Lampshade pieces and glue the tab in place.

### Lampshades 4-7

1. Gently curve the longer rectangle strip and glue the tabs one at a time onto the circular light fitting piece.
2. Glue the final tab in place.



## Picture Frames



For each Frame glue together the layers.

To make the Picture Frame stand up, glue the Stand file onto the back of the Frame.

## Vases



1. For each Vase, fold along the score line on the Vase and glue the tabs in place.
2. Glue the mats in place onto each side.
3. Fill the Vases with Flowers and Leaves. Attach the Flowers and Leaves onto wire to stand up in the Vase.

## Bathroom



## Bath



### Cutting List Construction Board

- 1 x Base
- 2 x Front and Back
- 2 x Sides
- 1 x Top

### Card

- 1 x Bath
- 2 x Front and Back Frame
- 2 x Side Frame
- 2 x Taps

1. Shape and glue the Bath piece together making sure to glue the tabs on the outside.
2. Glue the Bath to the underside of the Top.
3. Glue one of the Front and Back pieces to the underside of the Top.
4. Glue the Side pieces on either side of the underside of the Top.
5. Glue the other Front and Back piece to the underside of the Top.
6. Glue the Base piece onto the bottom of the Front and Back and Side pieces.
7. Glue the Side Frames and the Front and Back Frames on the outside on the corresponding pieces.
8. Glue the tap pieces together, leaving the tabs at the bottom unglued. Use those tabs to glue the taps to the Bath.



## Sink



### Cutting List Construction Board

- 1 x Base
- 2 x Front and Back
- 2 x Sides
- 1 x Top

### Card

- 1 x Sink
- 2 x Taps

1. Shape and glue the Sink piece together making sure to glue the tabs on the outside.
2. Glue the Sink to the underside of the Top.
3. Glue one of the Front and Back pieces to the underside of the Top.
4. Glue the Side pieces on either side of the underside of the Top.
5. Glue the other Front and Back piece to the underside of the Top.
6. Glue the Base piece onto the bottom of the Front and Back and Side pieces.
7. Glue the tap pieces together, leaving the tabs at the bottom unglued. Use those tabs to glue the taps to the Sink.

## Shelf



### Cutting List Construction Board

- 1 x Back
- 3 x Shelf
- 2 x Sides
- 2 x Top and Base

1. Glue the Back piece on top of the Base piece.
2. Glue the Side pieces on either side on top of the Base piece.
3. Glue the Top piece on top of the Back and Sides.
4. Glue in the Shelves equally spacing them up the Side pieces.

## Sink Mirror



**Cutting List**  
**Construction Board**  
 1 x Frame  
**Acetate or Mirror Card**  
 1 x Mirror

1. If using the Acetate Mirror piece use a Mirror Paint to add the effect.
2. Glue the Frame on the Front of the Mirror piece.

## Toilet



**Cutting List**  
**Construction Board**  
 1 x Base  
 2 x Front and Back  
 2 x Side  
 1 x Top  
 1 x Middle  
 1 x Seat  
 2 x Box Front and Back  
 2 x Box Sides  
 2 x Box Top and Base  
 1 x Support  
**Card**  
 1 x Bowl

1. Shape and glue the Bowl piece together making sure to glue the tabs on the outside.
2. Glue the Bowl to the underside of the Top.
3. Glue one of the Front and Back pieces to the underside of the Top.
4. Glue the Side pieces on either side of the underside of the Top.
5. Glue the other Front and Back piece to the underside of the Top.
6. Glue the Base piece onto the bottom of the Front and Back and Side pieces.
7. Glue the Support inside the Toilet on the Back.
8. Glue the Seat on top of the Top piece.
9. Glue the Middle to the Top piece, aligning it with the Back.
10. Build the Box by gluing the Box Front and Back pieces on top of the Box Base.
11. Glue the Box Side pieces on top of the Box Base.
12. Glue the Box Top piece on top of the Box Sides and Box Front and Back.
13. Glue the Box on top of the Middle piece, aligning the Middle piece with the back of the Box.

## Craft Room



## Cupboard



### Cutting List

#### Construction Board

2 x Front and Back

2 x Sides

2 x Top and Base

#### Acetate or Mirror Card

1 x Doors

1. Glue the Front and Back on top of the Base.
2. Glue the Sides on top of the Base.
3. Glue the Top on top of the Sides and Front and Back.
4. Glue the Doors onto the Front.

## Desk



### Cutting List

#### Construction Board

2 x Legs

2 x Sides

1 x Top

1. Glue one of the Leg pieces onto the underside of the Top.
2. Glue the Sides in place onto the underside of the Top, gluing onto the Leg.
3. Glue the final Leg piece in place.

## Sewing Machine



### Cutting List

4 x Front and Back

1 x Side

1. Glue the Side piece around two of the Front and Back pieces, one on either side of the Side strip. Glue the tabs on the outside.
2. Glue the other two Front and Back pieces on top of the tabs to cover.

## Shelves



Tip - Turn the Shelves on its side to create Wall Shelves, use the Side pieces as Shelves.

### Cutting List

#### Construction Board

1 x Back

1 x Shelf

2 x Sides

2 x Top and Base

1. Glue the Back onto the Base piece.
2. Glue the Side pieces on the Base piece on either side.
3. Glue the Top piece on top of the Side and Back pieces.
4. Glue the Shelf in between the Side pieces centrally.

# Dining Room



## Cabinet



### Cutting List

#### Construction Board

- 2 x Front and Back
- 2 x Sides
- 2 x Top and Base
- 2 x Front and Back Feet
- 2 x Sides Feet

#### Card

- 1 x Front Mat
- 1 x Drawer
- 1 x Doors



1. Glue one of the Front and Back pieces onto the Base.
2. Glue the Side pieces onto the Base.
3. Glue the other Front and Back piece onto the remaining side.

4. Glue the Top piece on top of all the Side and Front and Back pieces.
5. Glue the Front Mat onto the front of the Cabinet.
6. Glue on the Doors and Drawer pieces.

## Chair



### Cutting List Construction Board

- 1 x Back
- 1 x Seat
- 2 x Sides

1. Glue the Seat onto the Back aligning with the bottom of the Back.
2. Glue the Sides onto either side of the Back and Seat.

## Table



### Cutting List Construction Board

- 2 x Legs
- 2 x Sides
- 1 x Top

1. Glue one of the Leg pieces onto the underside of the Top.
2. Glue the Sides in place onto the underside of the Top, gluing onto the Leg.
3. Glue the final Leg piece in place.

## Chandelier



### Cutting List Card

1 x Centre  
2 x Sides  
2 x Side Mats

1. Glue two of the Side pieces together, not gluing the tab.
2. Fold out the tabs and glue the Side pieces to either side of the Centre. If desired glue some thread or string in at this point to attach to the ceiling.
3. Glue the Side Mats onto the Centre, covering the tabs.

## Dressing Room



## Dressing Table



### Cutting List

#### Construction Board

- 1 x Back
- 1 x Base
- 1 x Top
- 1 x Frame
- 1 x Mirror Stand
- 2 x Sides

#### Acetate or Mirror Card

- 1 x Mirror

1. Glue the Back on top of the Base, aligning it with the back edge.
2. Glue the Side pieces on either side of the Base.
3. Glue the Top piece on top of the Back and Side pieces.
4. Glue the Mirror Stand on the Top piece aligning it with the back.
5. If using the Acetate Mirror piece, use mirror paint to make the surface reflective.
6. Glue the Mirror piece to the Mirror Stand centrally.
7. Glue the Frame over the top of the Mirror.

## Mannequin



### Cutting List

#### Construction Board

- 1 x Middle
- 1 x Sides

1. Glue the Side pieces on either side of the Middle piece.

## Wardrobe



### Cutting List

#### Construction Board

- 2 x Front and Back
- 2 x Sides
- 2 x Top and Base
- 2 x Front and Back Feet
- 2 x Side Feet

#### Card

- 1 x Doors
- 1 x Drawer

1. Take one of the Front and Back pieces and glue it on top of the Base, aligning it with the back.
2. Glue the Side pieces on top of the Base at either end.
3. Glue the remaining Front and Back piece onto the Base.
4. Glue the Top piece on top of the Front and Back and Side pieces.
5. Glue the Front and Back Feet onto the underside of the Base.
6. Glue the Side Feet onto the remaining sides of the underside of the Base.
7. Glue the Doors and Drawer to the Front piece.

# Kids Bedroom



## Bunk Beds



### Cutting List Construction Board

2 x Front and Back

1 x Ladder

4 x Sides

4 x Support

2 x Top

1. Take one of the Front and Back pieces and glue two Support pieces on the inner side. Align the Support pieces with the top of the leg pieces on the Front and Back piece.

2. Repeat for the second Front and Back piece and Support pieces.
3. Glue the Side pieces on either side of the Support pieces on one of the Front and Back pieces.
4. Glue the other Front and Back piece to the Side pieces, gluing them onto the Supports.
5. Glue the Top pieces in over the top of the Sides and Support pieces.
6. Lean the Ladder on the Bunk Beds so it remains mobile or glue it in place on the side.

## Chair



### Cutting List Construction Board

- 1 x Back
- 1 x Seat
- 2 x Sides

1. Glue the Seat onto the Back piece, aligning it with the bottom of the Back.
2. Glue the Sides on either side of the Seat and Back.
3. Glue the Back Mat onto the Back piece.



## Desk



### Cutting List Construction Board

- 1 x Back
- 2 x Side
- 1 x Top

1. Glue the Side pieces onto either side of the Back piece, gluing them on the inside side.
2. Glue the Top on top of these pieces.

## Rocking Horse



### Cutting List Construction Board

- 3 x Rocking Horse

1. Layer up and glue together the Rocking Horse.
2. Glue the Saddle onto either side of the Rocking Horse.

## Toy Trunk



### Cutting List Construction Board

- 2 x Front and Back
- 2 x Sides
- 2 x Top and Base

### Card

- 1 x Top Embellishment
- 1 x Front Embellishment

1. Glue one of the Front and Back pieces onto the Base.
2. Glue the Side pieces on either side on the Base.
3. Glue the remaining Front and Back piece on the Base.
4. Glue the Top piece on top of the Sides and Front and Back pieces.
5. Glue the Front Embellishment onto the Front and the Top Embellishment onto the Top.

## Wardrobe or Chest of Drawers



### Cutting List

#### Construction Board

2 x Front and Back

2 x Sides

2 x Top and Base

#### Card

Cut Handles as desired

Cut either 3 x Drawer Front

OR 1 x Wardrobe Doors

1. Glue one of the Front and Back pieces onto the Base.
2. Glue the Side pieces on either side on the Base.
3. Glue the remaining Front and Back piece on the Base.
4. Glue the Top piece on top of the Sides and Front and Back pieces.
5. Glue either the Drawers or the Wardrobe Doors onto the Front.

# Kitchen



## Counter



### Cutting List

#### Unit

#### Construction Board

2 x Front and Back

2 x Sides

2 x Top and Base

#### Embellishments

#### Card

2 x Cupboard Front

1 x Hob

1 x Oven Front

Tip - Cut more of each Embellishment pieces and layer up for depth.

1. Glue one of the Front and Back pieces on top of the Base.
2. Glue the Side pieces on top of the Base.
3. Glue the remaining Front and Back piece on top of the Base.
4. Glue the Top piece on top of all the Front and Back and Side pieces.
5. To make the Hob, glue the Hob piece on top of the Unit, layering up the pieces.
6. To make the Oven, glue the Oven Front onto the front of the Counter in line with the Hob.
7. To make Cupboards, glue the Cupboard Fronts onto the remaining spaces on the front of the Counter.

## Fridge



### Cutting List Unit

#### Construction Board

2 x Front and Back

2 x Sides

2 x Top and Base

#### Card

1 x Fridge Door

1 x Freezer Door

1. Glue one of the Front and Back pieces on top of the Base.
2. Glue the Side pieces on top of the Base.
3. Glue the remaining Front and Back piece on top of the Base.
4. Glue the Top piece on top of all the Front and Back and Side pieces.
5. Glue the Fridge and Freezer Doors onto the Front of the Fridge.

## Shelves

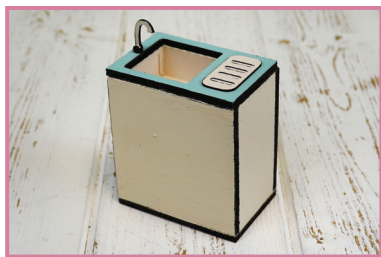


### Cutting List Construction Board

- 1 x Back
- 3 x Shelf
- 2 x Sides
- 2 x Top and Base

1. Glue the Back piece on top of the Base.
2. Glue the Side pieces on top of the Base.
3. Glue the Shelves in between the Sides, leaving equal space in between each shelf.
4. Glue the Top piece on top of the Sides and Back pieces.

## Sink



### Cutting List Construction Board

- 1 x Base
- 2 x Front and Back
- 2 x Sides
- 1 x Top

### Card

- 1 x Sink
- 1 x Tap
- 1 x Draining Board

Tip - Cut more of the Tap and Draining Board pieces and layer up for depth.

1. Glue one of the Front and Back pieces on top of the Base.
2. Glue the Side pieces on top of the Base.
3. Glue the remaining Front and Back piece on top of the Base.
4. Fold and glue the Sink together using the tabs, making sure to glue the tabs on the outside. Glue the circle in the bottom of the

Sink for the drain.

5. Using the tabs around the top of the Sink glue it onto the underside of the Top piece, lining up the Sink with the hole.
6. Glue the Top piece onto the top of the Front and Back and Side pieces.
7. Glue the Tap pieces and Draining Board pieces onto the Top.

## Stool



### Cutting List

#### Construction Board

- 1 x Top
- 1 x Leg 1
- 1 x Leg 2

#### Card

- 1 x Top Mat

1. Glue Leg 2 pieces either side of Leg 1.
2. Glue the Top on top of the Legs.

## Table



### Cutting List

#### Construction Board

- 2 x Legs
- 2 x Leg Sides
- 1 x Top

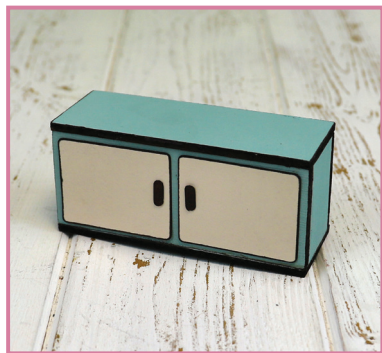
#### Card

- 1 x Top Mat
- 1 x Tablecloth



1. Glue one of the Leg pieces onto the underside of the Top.
2. Glue the Sides in place onto the underside of the Top, gluing onto the Leg.
3. Glue the final Leg piece in place.
4. Shape the Tablecloth as desired and glue onto the Top.

## Wall Cupboard or Shelf



### Cutting List Construction Board

1 x Back

2 x Top and Base

#### Cut either:

1 x Cupboard Front

2 x Cupboard Sides

#### Card

2 x Cupboard Embellishment

OR

2 x Shelf Sides

1 x Shelf

1. Glue the Back piece on top of the Base piece.
2. Glue the Sides on top of the Base, use the Cupboard Sides if building the Cupboard and Shelf Sides if building the Shelf.
3. If building the Cupboard, glue on the Cupboard Front.
4. If building the Shelf glue in the Shelf piece centrally.
5. Glue the Top piece on top of the unit.
6. If building the Cupboard glue the Cupboard Embellishments onto the front.

# Living Room



## Armchair



### Cutting List Construction Board

- 1 x Back
- 1 x Seat
- 2 x Sides

1. Glue the Seat onto the Back aligning with the bottom of the Back.
2. Glue the Sides onto either side of the Back and Seat.

## Sofa



### Cutting List Construction Board

- 1 x Back
- 1 x Seat
- 2 x Sides

1. Glue the Seat onto the Back aligning with the bottom of the Back.
2. Glue the Sides onto either side of the Back and Seat.

## Coffee Table



### Cutting List Construction Board

- 2 x Legs
- 2 x Sides
- 1 x Top

1. Glue the Side pieces onto one of the Leg pieces, aligning them with the Top of the Leg.
2. Glue the other Leg piece onto the Side pieces.
3. Glue the Side and Leg pieces to the underside of the Top.

## Side Table



### Cutting List Construction Board

- 2 x Legs
- 2 x Sides
- 1 x Top

1. Glue one of the Leg pieces onto the underside of the Top.
2. Glue the Sides in place onto the underside of the Top, gluing onto the Leg.
3. Glue the final Leg piece in place.

## Sideboard



### Cutting List Construction Board

- 2 x Legs
- 2 x Sides
- 1 x Top
- 1 x Shelf

1. Glue the Side pieces onto one of the Leg pieces, aligning them with the Top of the Leg.
2. Glue the Shelf halfway down the Leg piece.
3. Glue the other Leg piece onto the Side pieces.
4. Glue the Side and Leg pieces to the underside of the Top.

# Master Bedroom



## Bed



### Cutting List Construction Board

- 1 x Footboard
- 1 x Headboard
- 2 x Side
- 2 x Support
- 1 x Top

1. Glue the Support pieces onto the inside of the Footboard and Headboard, lining them up with the top of the leg part.
2. Take the Headboard and glue the Side pieces to either side of the Support piece.
3. Glue the Footboard onto the other end of the Side pieces, gluing them onto the Support piece.
4. Glue the Top on top of the Support and Side pieces.

## Bedside Table



### Cutting List

#### Construction Board

2 x Front and Back

2 x Sides

1 x Top

#### Card

1 x Drawer

1. Glue the Front piece onto the underside of the Top.
2. Glue the Side pieces on either side of the Front piece.
3. Glue the Back piece onto the remaining side.
4. Glue the Drawer piece on the Front.

## Standing Mirror



### Cutting List

#### Construction Board

1 x Back

2 x Sides

#### Mirror Card or Acetate

1 x Mirror

1. If the Mirror piece has been cut with acetate use a mirror spray or paint to make it reflective.
2. Glue the Mirror piece centrally onto the Back.
3. Glue the Sides onto either side of the Back.



## Wardrobe or Chest of Drawers



### Cutting List

#### Construction Board

2 x Front and Back

2 x Sides

2 x Top and Base

#### Card

#### Cut either:

4 x Drawer Front

OR 1 x Wardrobe Door

1. Glue the Top piece onto the backside of the Front piece, aligning it with the top.
2. Glue the Side pieces onto either side of the backside of the Front piece.
3. Glue the Base on the backside of the Front piece aligning it with the bottom of the Sides.
4. Glue the Back piece onto the Top and Base and Side pieces.
5. On the Front glue either the Drawers or the Wardrobe Door.

Tip: Glue the Drawers onto one side of the Unit and the Wardrobe Doors onto the other for a reversible piece of furniture.

# Nursery



## Changing Table



### Cutting List Construction Board

- 2 x Front and Back
- 2 x Sides
- 2 x Top and Base
- 1 x Top Frame
- 8 x Feet

### Card

- 1 x Cupboard Doors
- 1 x Shelves

1. Glue one of the Front and Back pieces to the inside side of one of the Top and Base pieces.
2. Glue the Side pieces on either side of the same Top and Base piece.
3. Glue the remaining Front and Back piece onto the Top and Base piece.
4. Glue the remaining Top and Base piece on top of the Sides and Front and Back.
5. Glue the Top Frame on top of the Top piece.
6. Glue two of each Feet pieces together to create four Feet.
7. Glue the Feet on the underside of the Base piece on the four corners.

## Cot



### Cutting List Construction Board

- 1 x Base
- 2 x Front and Back
- 2 x Sides
- 2 x Front and Back Feet
- 2 x Side Feet

1. Glue one of the Front and Back pieces on top of the Base piece, aligning it with the edge.
2. Glue the Side pieces on either side of the Base piece.
3. Glue the remaining Front and Back piece onto the Base.
4. On the underside of the Base, glue one of the Front and Back Feet in place, aligning it with the edge.
5. Glue the Side Feet pieces on either side of the Base.
6. Glue the remaining Front and Back Feet in place.

## Cupboard



1. Glue one of the Front and Back pieces to the inside side of one of the Top and Base pieces.
2. Glue the Side pieces on either side of the same Top and Base piece.
3. Glue the remaining Front and Back piece onto the Top and Base piece.
4. Glue the Remaining Top and Base piece on top of the Sides and Front and Back.

### Cutting List

#### Construction Board

- 2 x Front and Back
- 2 x Sides
- 2 x Top and Base
- 2 x Front and Back Feet
- 2 x Side Feet

#### Card

- 1 x Doors
  - 1 x Drawer
5. On the underside of the Base, glue one of the Front and Back Feet in place, aligning it with the edge.
  6. Glue the Side Feet pieces on either side of the Base.
  7. Glue the remaining Front and Back Feet in place.
  8. Glue the Doors and Drawer onto the Front.

## Rocking Chair



### Cutting List

#### Construction Board

- 1 x Back
  - 1 x Seat
  - 2 x Sides
1. Glue the Seat onto the Back, aligning it with the bottom.
  2. Glue the Side pieces onto either side of the Back and Seat.

## Table



### Cutting List Construction Board

1 x Top  
2 x Legs  
2 x Sides

1. Glue one of the Leg pieces onto the underside of the Top.
2. Glue the Sides in place onto the underside of the Top, gluing onto the Leg.
3. Glue the final Leg piece in place.

## Reception Room



## Chair



### Cutting List Construction Board

- 1 x Back
- 1 x Seat
- 2 x Sides

1. Glue the Seat onto the Back.
2. Glue the Side pieces onto either side of the Back.

## Chaise Lounge



### Cutting List Construction Board

- 1 x Back
- 1 x Seat
- 1 x Sides

1. Glue the Seat onto the Back.
2. Glue the Side pieces onto either side of the Back.

## Shelves



### Cutting List Construction Board

- 1 x Back
- 2 x Sides
- 2 x Top and Base
- 3 x Divider
- 4 x Shelf

1. Glue the Back piece on top of the Base.



2. Glue the Side pieces on either side of the Base.
3. Glue the Dividers onto the Base, spacing them equally. Use the Shelves as a guide.
4. Glue the Shelves in between the Dividers so they sit halfway up the Back.
5. Glue the Top piece on top of the Back and Sides.

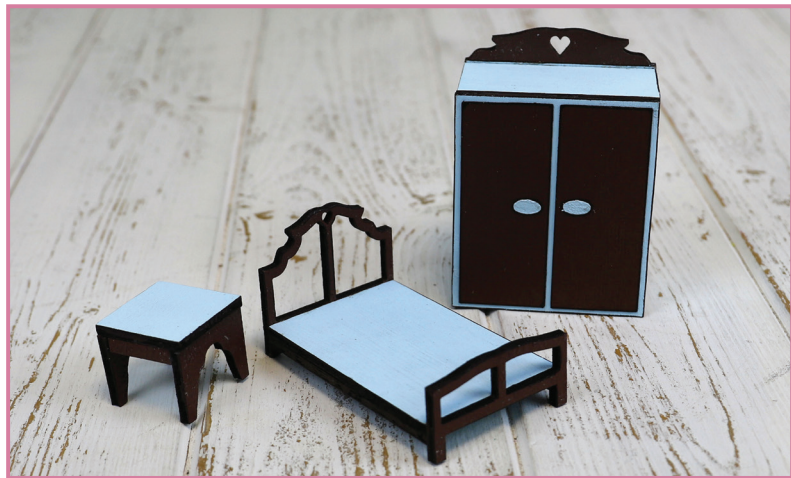
## Table



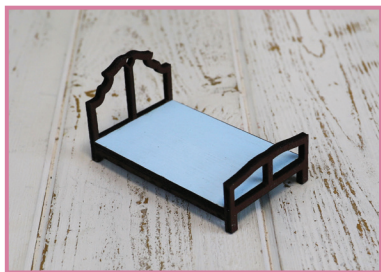
### Cutting List Construction Board

- 1 x Top
  - 2 x Legs
  - 2 x Sides
1. Glue one of the Leg pieces onto the underside of the Top.
  2. Glue the Sides in place onto the underside of the Top, gluing onto the Leg.
  3. Glue the final Leg piece in place.

# Single Bedroom



## Bed



### Cutting List Construction Board

1 x Headboard

1 x Footboard

1 x Top

2 x Support

1. Glue the Support pieces on the underside of the Top piece, aligning them to the sides.
2. Glue the Top to the Headboard and Footboard.

## Bedside Table



### Cutting List

#### Construction Board

- 1 x Top
- 2 x Legs
- 2 x Sides

1. Glue one of the Leg pieces onto the underside of the Top.
2. Glue the Sides in place onto the underside of the Top, gluing onto the Leg.
3. Glue the final Leg piece in place.

## Wardrobe



### Cutting List

#### Construction Board

- 2 x Front and Back
- 2 x Sides
- 2 x Top and Base
- 1 x Top Embellishment

#### Card

- 1 x Doors

1. Take one of the Front and Back pieces and glue it on top of the Base piece, aligning it with the back.
2. Glue the Side pieces on either side on top of the Base.
3. Glue the remaining Front and Back piece on top of the Base.
4. Glue the Top piece on top of the Front and Back and Side pieces.
5. Glue the Top Embellishment on top of the Top piece aligning it with the back.
6. Glue the Doors onto the Front piece.

# Study



## Bookcase 1



### Cutting List Construction Board

- 1 x Back
- 1 x Base
- 1 x Embellishments
- 1 x Front
- 3 x Shelf
- 2 x Side

1. Glue the Sides onto the edge of the Base.
2. Glue the Front piece in place onto the edge of the Base and Side pieces.

- Align one of the Shelves to sit below the cut out in the Front piece and glue in place onto the Sides.
- Position the Shelves in place to sit with equal spacing when viewing from the front of the Bookcase,

aligning the final Shelf with the top of the Sides to create the top of the Bookcase.

- Glue the Back in place.
- Glue the Embellishments in place onto the front of the Bookcase.

## Bookcase 2



### Cutting List Construction Board

- 1 x Back
- 1 x Base
- 1 x Embellishments
- 1 x Front
- 4 x Shelf
- 2 x Side

- Glue the Sides onto the edge of the Base.
- Glue the Front piece in place onto the edge of the Base and Side pieces.
- Position the Shelves in place to sit with equal spacing when viewing from the front of the Bookcase, aligning the final Shelf with the top

of the Sides to create the top of the Bookcase.

- Glue the Shelves in place onto the Side pieces.
- Glue the Back in place.
- Glue the Embellishments in place onto the front of the Bookcase.

## Chair



### Cutting List Construction Board

- 1 x Back
- 1 x Embellishments
- 1 x Seat
- 2 x Side

1. Glue the Sides in place onto the Back piece.
2. Glue the Seat in place onto the Back and Side pieces.
3. Glue the Embellishments in place onto the Back and Seat pieces.

## Desk



### Cutting List Construction Board

- 6 x Drawer 1
- 1 x Drawer 2
- 2 x Front and Back
- 2 x Side
- 1 x Top

1. Glue the Back piece in place onto the underside of the Top piece.
2. Glue the Sides in place onto the Top and Back pieces.
3. Glue the Front in place onto the Top and Side pieces.
4. For each Drawer layer up and glue the Drawer front together.
5. Position three of Drawer 1 onto one side of the front of the Desk and glue in place. Repeat with the other side.
6. Glue Drawer 2 in place centrally onto the front of the Desk.



## Grandfather Clock



### Cutting List Construction Board Base

- 2 x Base and Top
- 2 x Front and Back
- 2 x Side
- 1 x Embellishments

### Clock

- 2 x Base and Top
- 2 x Front and Back
- 2 x Side
- 1 x Embellishments

1. To build the Base, glue the Front piece in place onto the Base.
2. Glue the Sides in place onto the Base and the Front piece.
3. Glue the Back piece in place onto the Base and Sides.
4. Glue the Top piece in place onto the edges of the Front, Back and Sides.
5. Glue the Embellishments in place onto the Front and Sides.
6. Repeat steps 1-4 with the Clock pieces.
7. Glue the Embellishments onto the Front of the Clock.
8. Glue the Clock centrally onto the Base.

## Notes

## Notes

This image shows a single sheet of white paper with horizontal ruling lines. The lines are evenly spaced and run across the width of the page. There are no margins or other markings on the paper.

