



Spring



INSTRUCTION BOOKLET

The Cutting Craftorium Collection

Have you got them all?



Decorative Dimensions ☐



Tiny Tubs ☐



Style Boutique ☐



Christmas Vol.1 ☐



Alphabet ☐



Romance Vol.1 ☐



Easter ☐



Celebrations ☐



Home Sweet Home ☐



Romance Vol.2 ☐



Daydreaming ☐



Christmas Vol.2 ☐



Play ☐



Pop ☐



Decorative Dimensions Vol.2 ☐



Days Out ☐

Contents

<u>Project</u>	<u>Page</u>	<u>Project</u>	<u>Page</u>
Bird Table.....	4-6	Simple Plant Pot	19
Beehive Gift Box	7	Shed	20-21
Bench Swing.....	8	Watering Can.....	22-23
Birdhouse Gift Box.....	9	Butterfly Box	24
Bunny Gift Box	10	Wreath Box.....	24
Chicken Treat Bag	10	Flower Shapes	25
Conservatory	11	Bunting.....	25
Rambling Rose	12	Cupcake Toppers.....	26
Tea Rose.....	13	Cupcake Wraps.....	26
Round Flower Vase	14	Butterflies.....	27
Wheelbarrow	15	Seed Envelopes.....	27
Flower Pot Box	16	Plant Tags	28
Lamb Treat Bag	17	Leaf Shapes	28
Oak Leaf Vase	17	Cards.....	29
Watering Can Box	18	Wreaths	30
Decorative Plant Pot.....	19		



Bird Table

Cutting List

Base

- 1 x Base
- 4 x Side Mat
- 4 x Side
- 4 x Stand Side
- 1 x Stand Top and Base

Bird Table

- 4 x Overhang Side
- 4 x Overhang Top
- 4 x Side Mat
- 4 x Side
- 2 x Top and Base

Roof

- 1 x Base
- 4 x Side
- 4 x Tiles 1 – 5

Base

1. Using the Side pieces, glue to the edges of the Base piece, then glue the Side pieces together using the tabs at the sides.
2. Decorate the section completed in step 1 using the Side Mat pieces.
3. Using the Stand Side pieces, glue together using the long tabs at the sides. If you wish to make a taller stand, elongate the side piece lengthwise and use a 12 x 24 mat to cut them.

4. Using the Stand Top and Base pieces, glue to the top and base of the assembled Stand Side pieces.
5. Apply glue to one end of the stand and insert the stand into the corresponding gap in the base. Ensure the glue is fully dry and the structure is secure before proceeding to the next stage.



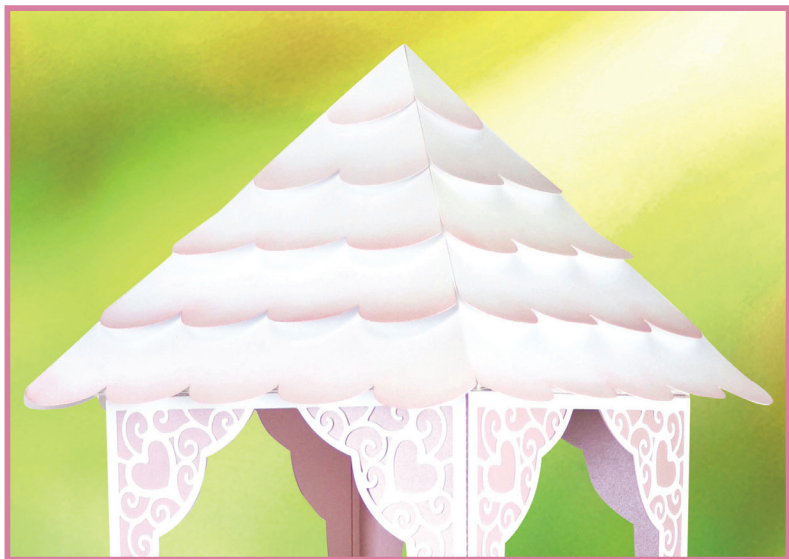
Bird Table

6. Using the Overhang Side pieces, glue the long tab at the top to the underside of the Overhang Top piece. Glue the Side pieces together using the small tabs at the sides.
7. Glue the completed overhang section to the top of the Stand section ensuring it is positioned centrally.
8. Assemble the main bird table section by gluing together the Side, Top and Base pieces to create a box shape.
9. Decorate the bird table using the Side Mat pieces.

10. Glue the completed bird table section to the top of the overhang section, ensuring it is positioned centrally.

Roof

11. Using the Side pieces, glue to the edges of the Base piece using the tabs at the base, then glue the Side pieces together using the tabs at the sides to create the pyramid roof shape.
12. Decorate the roof with the Tile pieces, starting with the largest and working through to the smallest as shown in the image.



Beehive Gift Box



Cutting List

1 x Box
1 x Lid Mat and
Embellishments
1 x Lid

1. Glue the Box together by the score lines.
2. Glue the Lid by the score lines.
3. Place the beehive mat on top of the Lid.
4. Decorate with the bees.

Bench Swing



Cutting List

1 x Base
1 x Bench
1 x Front and Back
1 x Roof
1 x Sides
1 x Dowel

1. Glue the Sides to the Front and Back pieces of the Bench frame.
2. Glue the Roof pieces together and bend by the score lines.
3. Glue the Roof part to the top of the Front and Back of the Bench frame.
4. Separately, bend the Bench by the score lines and glue the arm to each side of it.
5. Glue the Base pieces to the bottom of the Bench frame.
6. Using a Dowel, place the Bench inside the frame.

Birdhouse Gift Box



Cutting List

1 x Base
1 x Front Mats
1 x Roof Mats
1 x Roof
1 x Sides Mats
1 x Sides
1 x Stand

1. Glue the mats to the Roof and Sides pieces.
2. Glue the Sides to the Base.
3. Glue the Roof parts together.
4. Place the Roof piece on top of the birdhouse, gluing it by the remaining tab.
5. Glue the Stand on the bottom of the birdhouse's hole.

Bunny Gift Box

Cutting List

1 x Bunny Box

1. Glue the box piece together.
2. Add the embellishments to the box as seen in the picture.



Chicken Treat Bag

Cutting List

1 x Chicken Bag

1. Bend the box piece of the bag by the score lines.
2. Glue both chicken shapes on each side of the box piece.
3. Glue the handle to the bag.



Conservatory



Cutting List

1 x Back
1 x Base
1 x Frames
1 x Front
1 x Leaves
1 x Peacock Chair and Table
1 x Plant Pots
1 x Roof
1 x Sides
1 x Windows 1
1 x Windows 2
1 x Windows 3

1. Using acetate, cut the Windows pieces. Glue them to the inside of the Back, Front, Sides and Roof.
2. Glue the bottom tabs of the Back, Front and Sides to the Base.
3. Add the details of the interior, as well as the plants and Peacock Chair and Table.
4. Glue the Front, Back and Sides together by the tabs.
5. Bend the Roof piece by the score lines.
6. Glue the Roof part to the top of the conservatory.

Rambling Rose



Cutting List

1 x Calyx

1 x Petals

1. Using a ball tool, shape the petals inwards so they will curve towards the centre of the rose.
2. Using the largest Petals piece, glue together at the sides using the end tab, then glue the remaining tabs to the attached heptagon shape which will create the base for the flower.
3. Take the next largest petal shape and glue together at the sides using the end tab. Glue the remaining tabs to the base of the first petal shape.
4. Continue in size order with the remaining petal shapes.
5. Glue the completed flower to the centre of the Calyx piece to finish.

Tea Rose



Cutting List

1 x Calyx

1 x Petals

1. Using a ball tool, shape the petals outwards, away from the centre of the rose.
2. Using the largest Petals piece, glue together at the sides using the end tab, then glue the remaining tabs to the attached heptagon shape which will create the base for the flower.
3. Take the next largest petal shape and glue together at the sides using the end tab. Glue the remaining tabs to the base of the first petal shape.
4. Continue in size order with the remaining petal shapes, with the exception of the petal shape that has no tabs.
5. Using the remaining petal shape, roll up to create the shape of the centre of a rose and glue into the centre of the flower.
6. Glue the completed flower to the centre of the Calyx piece to finish.

Round Flower Vase



Cutting List

1 x Base
1 x Sides Mats
1 x Sides

1. Glue the Sides Mats to the Sides pieces.
2. Glue the Sides to the Base and then glue them together by the tabs, bending them first by the score lines.

Wheelbarrow



Cutting List

1 x Mats
1 x Tray
3 x Wheels
1 x Dowel

1. Using construction card, cut the Wheel parts.
2. Glue the Wheel parts to the construction card.
3. Place the Mats of the Wheel Barrow on the tray pieces.
4. Glue the Wheel Barrow tray parts together.
5. Using a Dowel, place the wheel in between the legs and glue the legs to the tray.

Flower Pot Box

Cutting List

- 1 x Bow
- 1 x Box
- 1 x Flower
- 4 x Leaf

1. Using the Box piece, assemble by gluing the tabs to the corresponding sides.
2. Using the Flower pieces, mat the small flower shape to the large flower shape, then mat the circle piece to the centre.
3. Mat the completed flower shape to the corresponding section of the box so it faces towards the inside of the box.
4. Using the Leaf pieces, glue to the edges of the top of the pot shape at the front of the box.
5. Using the long Bow piece, glue the ends in to the centre.
6. Wrap the small bow piece around the centre to cover the join and create the 'knot'.
7. Glue the completed bow section to the top of the bow tails and glue this in between the leaves on the front of the box.



Lamb Treat Bag

Cutting List

- 1 x Bag
 - 1 x Embellishments
1. Bend the box by the score lines and glue it together by the tabs.
 2. Decorate it with the embellishments.



Oak Leaf Vase



Cutting List

- 1 x Base
 - 1 x Sides Mats
 - 1 x Sides
1. Glue the Sides Mats to the Sides pieces.
 2. Glue the Sides to the Base and then glue them together by the tabs, bending them first by the score lines.

Watering Can Box



Cutting List

1 x Box

1 x Handle and Spout

1. Assemble the Box piece by gluing the tabs to the corresponding sides.
2. Using the Spout pieces, mat the two sides together leaving the tab ends open.
3. Fold the tabs on the spout outwards and glue to the front of the box.
4. Using the Handle piece, glue the ends to the back of the box to create a handle shape.

Decorative Plant Pot

Cutting List

1 x Base
8 x Side Mat
8 x Side

1. Using the Side pieces, glue the short tabs at the base to the edges of the Base piece.
2. Glue the Side pieces together using the tabs at the sides.
3. Decorate with the Mat pieces.



Simple Pot

Cutting List

1 x Simple Pot

1. Using the largest piece, assemble by gluing the tabs to the corresponding sides.
2. Using the remaining piece, glue to the top of the pot to create a rim.



Shed



Cutting List

Base

- | | |
|------------------|-----------------------|
| 1 x Grass | 1 x Porch Support |
| 1 x Sides | 1 x Roof Front |
| 1 x Steps | Underhang |
| 2 x Top and Base | 1 x Roof Mat |
| | 1 x Roof |
| | 2 x Sides |
| | 1 x Windows and Doors |

Shed

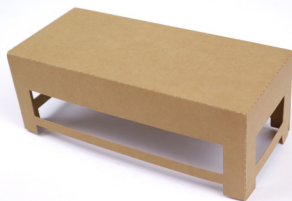
- | | |
|-----------|-------------|
| 1 x Back | Decorative |
| 1 x Base | Elements as |
| 1 x Front | desired |

1. Using the Sides, Top, and Base section, glue the tabs to the corresponding sides to create a flat box shape.
2. Assemble the Steps by gluing the large section to the edges of the L shaped pieces.
3. Glue the completed steps to the front centre of the base section.
4. Decorate the base section with the Grass pieces.

Shed

5. Using the Base, Front, Back, and Sides pieces, glue together using the corresponding tabs to create the basic shed shape.
6. If using the Workbench, assemble by gluing the tabs to the corresponding sides and secure in place inside the shed.

7. Using the Roof piece, glue to the top of the shed section, ensuring the back of the roof is lined up with the back of the shed. This will create the roof overhang for the porch at the front of the shed.
8. Glue the shed section to the base section. Ensure it is positioned so the back of the shed is lined up with the back of the base.
9. Using the Roof Front Underhang piece, glue the tabs to the front underside of the roof.
10. Using the Porch Support pieces, glue to either side of the Base and Roof with the scalloped edge overlapping the shed sides.
11. Decorate the shed with the Windows and Doors pieces.



Watering Can



Cutting List

- 1 x Base
- 2 x Handle
- 6 x Side Mat
- 8 x Side
- 1 x Spout Head 1
- 1 x Spout Head 2
- 1 x Spout

1. Using the Side pieces, glue to the edges of the Base piece, then glue the sides together using the long tabs.
2. Using the large Spout piece, glue together using the long tab at the side.
3. Glue the remaining Spout pieces to the corresponding ends of the large spout section.
4. Using the Spout Head 1 piece, assemble by gluing the tabs to the corresponding sides.
5. Using the hexagonal Spout Head 2 piece, glue to the top of the Spout Head 1 piece.
6. Mat the remaining two Spout Head 2 pieces together then mat this to the top of the spout head piece.
7. Glue the completed spout head to the top of the spout. Ensure this is fully dry before proceeding.
8. Glue the completed spout to one side of the watering can section, holding in place until the glue has dried securely.
9. Using one of the Handle pieces, glue to the opposite side of the watering can to the spout to create a handle shape.
10. Using the remaining Handle piece, glue the ends to the inside of opposite edges of the watering can to create another handle at the top.
11. Decorate the remaining plain sides of the watering can with the Side Mat pieces.

Butterfly Box

Cutting List

- 1 x Box
- 1 x Mat

1. Using the Box piece, glue the tabs to the inside of the butterfly shape, ensuring they do not protrude over the edges.
2. Decorate with the Mat piece to finish.



Wreath Box

Cutting List

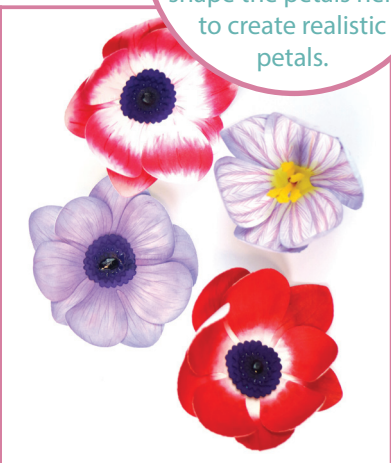
- 1 x Box
- 1 x Wreath Mat

1. Assemble the Box piece by gluing the tabs to the corresponding sides.
2. Decorate the box with the Mat pieces to finish.



Flower Shapes

Layer up the petal shapes to create fuller-looking flowers. Using ink to colour and a ball tool to shape the petals helps to create realistic petals.



Bunting



Cupcake Toppers



Cupcake Wraps



Butterflies



Seed Envelopes



Plant Tags



Leaf Shapes



Cards



Wreaths



Top Tips

1. Why not use grey board to reinforce your designs.
2. Ensure your blade depth is set correctly for the material you are cutting to avoid damaging the mat.
3. If resizing the project, make sure you resize all elements and save these in a new file so you can use them as required.
4. If using scraps of paper, scan first so you can get the most out of your cardstock.



5. Colour coordinate your projects to fit in with your home décor.
6. Why not start with a small project and work up to a bigger project so you can see your progress!
7. Ink the edges of your projects to create a vintage look.
8. Co-ordinate home décor projects by cutting files from matching wallpaper.

